

ATLANTIC

PRODUCTION PLANTS FOR YOUR SUCCESS – HP-BFS – THE TECHNOLOGY LEADER



BFS

ATLANTIC

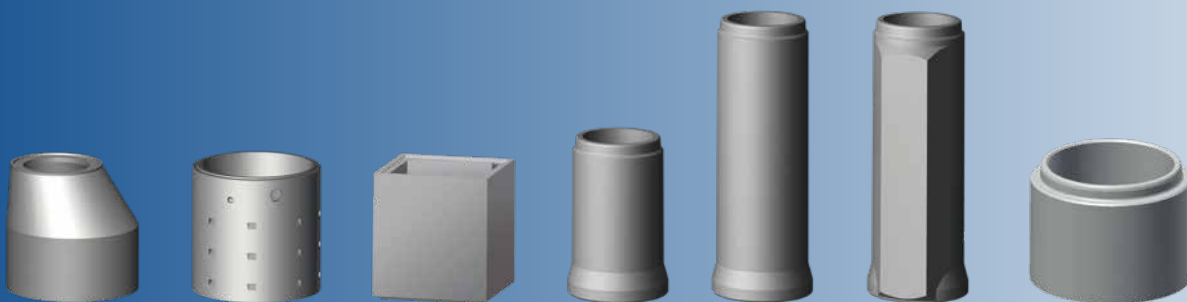
The ATLANTIC from **HP-BFS** produces premium-quality concrete products. With its extremely short cycle times, the two carriage system for direct demoulding ensures high product output.



"We customize our Atlantic versions for maximum product quality at a maximum product range!"

Daniel Bühler & Klaus Müller
Managing Directors, **BFS** GmbH

HP-BFS-ATLANTIC-PRODUCTS:

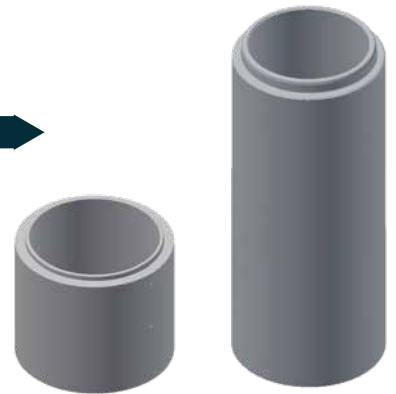




HP-BFS-ATLANTIC ADVANTAGES AT A GLANCE

1 Range

Efficient manhole and pipe production — the ATLANTIC spectrum of product ranges from DN 300 to DN 2,000 with product heights from 100 to 2,500 millimeters — in premium quality and with a high output. The model versions range up to fully automatic production.



2 Cycle times

Cycle times starting from 45 seconds!
With its extremely short cycle times, the two carriage system for direct demoulding ensures high product output.



3 Product quality

The quality and condition of the product is the task of the **HP-BFS** machine. The consistently high product quality therefore does not depend on the operator's personal qualifications.



4 1-man operation

The **HP-BFS**-ATLANTIC system can be operated by a single person, including mounting parts, intermediate storage, and removal.



5 Modular

HP-BFS machines are modular!
The system — for single or double production — requires little space and can be tailored to the local circumstances.





From the base pallet magazine, the pusher system moves one pallet to the release agent spraying station and next into the concrete casting position.

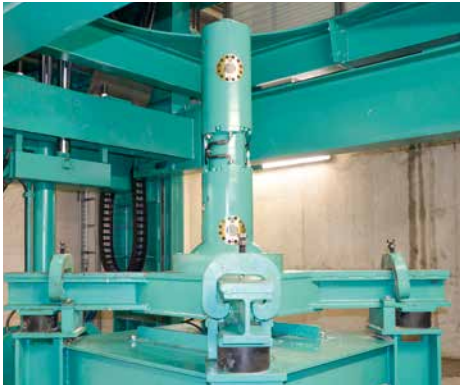
The generously dimensioned hydraulic aggregate with state-of-the-art proportional valve technology ensures output reserves, operational reliability, and fast cycle times. The clear structure of the modules enables simple, quick maintenance.



After demolding, the products are automatically transported out of the production machine for curing with a computer-operated ROBOTRAC system or by the agile **HP-BFS** electric trolley.

HP-BFS-ATLANTIC





Concrete compaction is effected by a modern central vibrator with hydraulic mould core clamping. The frequency-controlled direct drive is realized by dynamic electric motors with a large RPM range. The **HP-BFS**-typical vibration cross with sophisticated vibration insulation against the foundation, ensures maximum application of vibration forces to the mould equipment with minimum noise.



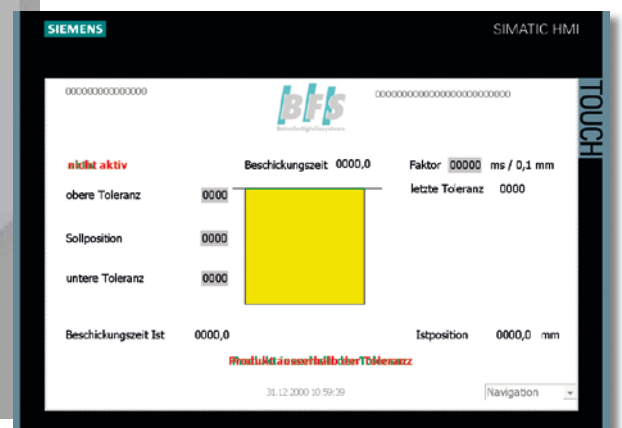
For manhole risers and cones, stepping elements can be vibrated in during production. The mounting parts can be fed automatically by a robot or manually.

Whether steel steps or stirrups in direct cast-in or pre-piercing systems for later insertion – **HP-BFS** has the right system.



After demoulding, the products are automatically evacuated from the production machine. Further transport to the curing area can be done by a computer-controlled ROBOTRAC system or the agile **HP-BFS** electric trolley. Without any alteration, its adjustment system adapts to different product dimensions.

The "HEIMO" automatic height monitoring system reliably minimizes dimensional tolerances.



HP-BFS-ATLANTIC – FOR AN AUTOMATED PRODUCTION



1: STEPPING ELEMENTS INSERTION SYSTEM

- Manually via simple stair access
- Via convenient insertion lift
- Or fully automatic by the **HP-BFS** insertion robot

2: FULLY AUTOMATIC PRODUCTION WITH TURN OVER MOULDS

With the additional ATLANTIC ROTO equipment, your ATLANTIC can be transformed into a turn over automat. Manhole base elements, cover slabs, gutters, highway barriers... no problem for the ROTO!

3: TRANSPORT ANCHOR INSERTION SYSTEMS

Semi or fully automatic insertion and cast in of transport anchors, threaded sleeves etc. By proven, reliable **HP-BFS** technology.

4: ROBOTRAC

The fully automatic crane robot for the complete automation of your system. ROBOTRAC assumes the task of transporting fresh products, installation and removal of the spigot-end set rings, and the evacuation of the cured concrete products – quick, reliable, and safe.

5: REINFORCEMENT INSERTION SYSTEM

For automatic insertion of reinforcement rings or reinforcement cages, the right insertion system is available for both pipe and manhole element production.

6: BASE PALLET HANDLING

The feeding and returning of base pallets from the storage area to the machine, the installation of seals on the base pallets as well as application of release agent are all assumed by the handling systems from the **HP-BFS** product range.

7: BASE PALLET CLEANING

Gentle and fast – pallet ring cleaning is realized by the CNC-controlled PUMA cleaning robot or by the pallet brush machine, which is easy to integrate into the machinery circulation.

8: SINGLE OR DOUBLE PRODUCTION: ATLANTIC MONO OR ATLANTIC DUO.

With the duo, two products can be produced simultaneously up to DN 600.



9: HP-BFS FINITEC TECHNOLOGY

During curing, the spigot-end ring remains on the concrete products, resulting in a high dimensional accuracy and roundness of the spigot-end profile. The right system for ideal product quality.



a) Synthetic support rings b) FINITEC technology



Atlantic

BFS

BFS

BFS





For more product videos,
visit our YouTube channel:



HP-BFS – OUR SERVICE SAVES TIME AND MONEY.

For **HP-BFS**, the delivery of a system, machine, or mould represents the start of a partnership. Satisfied customers guarantee success and further growth. Excellent customer service, fast and reliable spare part supply, quick and competent troubleshooting and support from our experienced technicians over the **HP-BFS** hotline, as well as swift, professional on-site service make **HP-BFS**, a reliable partner.

HOTLINE:

- Experienced and field-tested professionals help to solve production issues and rectify malfunctions
- With modern, online remote maintenance units, we support our customers in troubleshooting their control systems

SPARE PART SUPPLY:

- Competent consulting, fast processing and short term delivery when a spare part is needed
- Our high-quality original spare parts meet the highest of quality standards

SERVICE CONTRACTS:

- Organized and regular maintenance by trained, experienced **HP-BFS** staff reduces machine downtime related to malfunctions and increases the service life of our systems
- On request, our service technicians and application experts help you on-site in optimizing the quality and performance of your systems
- Regular inspection and optimization of the safety status of your machinery helps operating staff to prevent accidents

HOTLINE: SERVICE & CONSULTATION

Tel.: +49 7344 9603-55
E-Mail: bfs.service@hp-bfs.com

SPARE PARTS:

Tel.: +49 7344 9603-77
E-Mail: bfs.spareparts@hp-bfs.com

HawkeyePedershaab
506 S. Wapello St.
Mediapolis, Iowa, 52637
United States of America
Phone +1 (319) 394-3197
info@hpct.com
www.hawkeyepedershaab.com

HawkeyePedershaab
Saltumvej 25
9700 Brønderslev · Denmark
Phone +45 9645 4000
pedershaab@hpct.com
www.hawkeyepedershaab.com

BFS Betonfertigteilssysteme GmbH
Dr.-Georg-Spohn-Straße 31
89143 Blaubeuren · Germany
Phone +49 (0)7344 96030
BFS.info@hp-bfs.com
www.hp-bfs.com

BFS Italia srl.
Viale Verbania 9/G
33074 Fontanafredda · Italy
BFS.plant@hp-bfs.com
www.hp-bfs.com



Atlantic

BFS Betonfertigteilesysteme GmbH
Dr.-Georg-Spohn-Straße 31
89143 Blaubeuren
Germany
Phone +49 (0)734496030
BFS.info@hp-bfs.com
www.p-bfs.com



HawkeyePedershaab
Concrete Technologies Worldwide



NEW HAMPTON
Metal Pile

CSpillman
Where Concrete Takes Form

CAM
PRODUCTS

The Afinitas family of brands

