



Crete Hawg

Remote-Controlled Concrete Pouring Bucket



Intelligent Concrete Pouring

- Simpler and faster
- Wireless radio controller
- Safer to operate



The Crete Hawg system utilizes robust, wireless radio control technology to operate the gate. This allows the user to operate the system from a SAFE location, without being tethered to the bucket. No unnecessary climbing is required to operate a manual handle, which allows for faster production cycles.

Features

Each Crete Hawg Concrete Bucket System comes fully equipped with technology to take your production to the next level. Standard features include:

- Wireless Remote Control Slide Gate System
- 6" of freeboard above rated capacity level
- Removable/replaceable crane lifting bail
- Forklift pockets
- On board air tanks
- "Auto Drain" air filtration assembly
- On board 12 Volt electrical system
- On board manual operation valves (This is a redundant feature if electrical failure of any type should occur)
- All "Concrete Contact" steel is AR plate (Abrasion Resistant)
- "Wear & Spare" parts are in stock for immediate delivery
- Keeps the operator positioned in a SAFE location (No climbing required to operate a manual handle)
- Faster production cycles
- 1, 2, 3, 4 Cubic Yard Capacities are available
- Custom-designed Crete Hawg concrete buckets are available for both wetcast and drycast applications

Slide Gate System Advantages

The Slide Gate System uses "wireless radio control technology" to open and close the air operated slide gate.

On Board Air Tanks

The Crete Hawg Concrete Bucket System comes fully equipped with two on board air tanks. Air tanks are designed with the appropriate relief valves, tank drain valves, pressure gauges and air supply shut off ball valves.

12 Volt Electrical System and battery SMART charger

The electrical system is complete with a 12 volt supply. The Crete Hawg also includes an on board battery SMART maintainer charger.

Wireless Remote Control

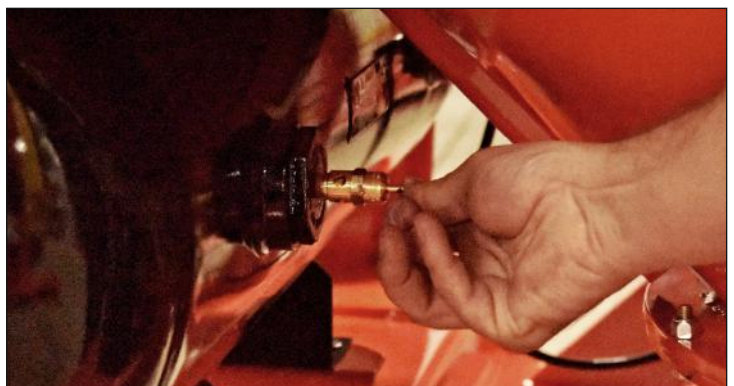
The wireless remote operates the patented air actuated Slide Gate System. There are no air or electrical lines tethering you to the bucket. Each Crete Hawg Concrete Bucket System comes with two wireless remotes, so if one is damaged or fails to work, you are not without the patented technology.

Additional Crete Hawg Options

- Ladder with "SlipNOT" slip resistant ladder rungs
- Bolt on, plywood splash cover for half opening
- 2' Pivoting/removable pouring chute
- 4' Removable chute extension for above chute
- 2' Quick change fixed position pouring chute
- Quick change funnel adapter — 4, 8, or 12 inch diameter x 10' long hose.



System Pressure Gauge & Quick Fill Coupler
with Ball Valve Shut Off



Pressure Relief Valve



Crete Hawg Concrete Bucket Series



FS Series

Flat Side - Off Center Discharge
Concrete Bucket

Standard concrete bucket used when pouring "Self-Compacting Concrete" and 4"- 8" slump concrete. Best for pouring wetcast round manholes, pipe, boxes and flat wall products.



RC Series

Round - Center Discharge
Concrete Bucket

Standard concrete bucket used when pouring "Self-Compacting Concrete" and 4"- 8" slump concrete. Best unit when pouring large open bed type wetcast forming.



DC Series

Dry Cast - Center Discharge
Concrete Bucket



FSLP Series

Flat Side - Low Profile - Off Center
Discharge Concrete Bucket

Concrete bucket used when pouring "Self-Compacting Concrete" and 4"-8" slump concrete. Best used when low profile charging of the unit is needed. Best for pouring wetcast round manholes, pipe, boxes and flat wall products.

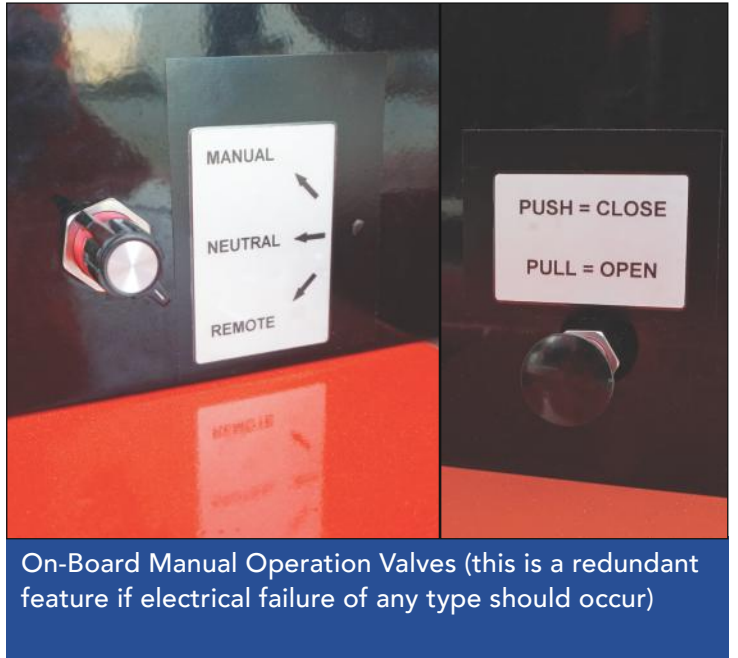


Wireless Remote Control

- Keeps the operator positioned in a **SAFE** location
(no climbing required to operate a manual handle)
- Faster production cycles



Crete Hawg Machine Features



On-Board Manual Operation Valves (this is a redundant feature if electrical failure of any type should occur)



Supply Tank Pressure Relief Valves

Additional Options



RC Series Splash Guard



FS & FSLP Series Splash Guard

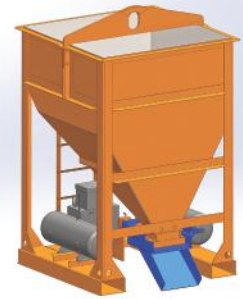
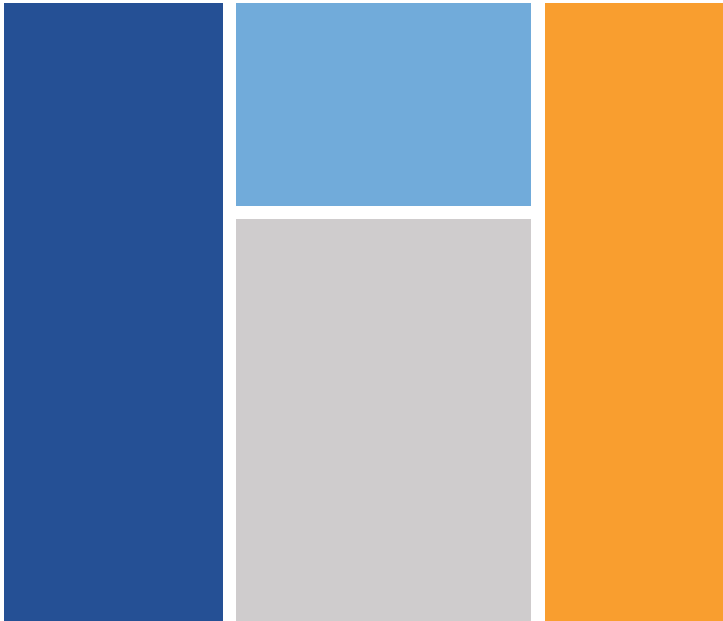


Ladder - all Crete Hawg Buckets



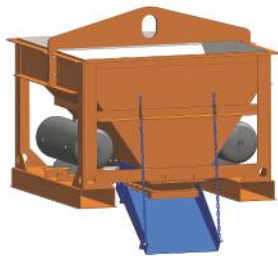
Funnels and Chutes

FS, FSLP, RC Series



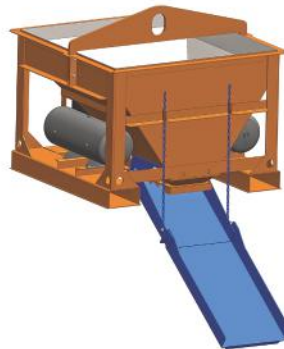
FS & FSLP Series

Quick change funnel with fixed chute



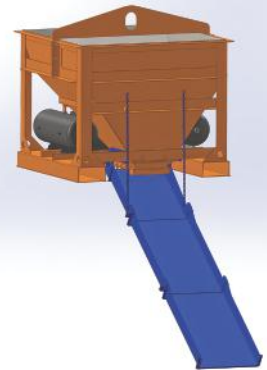
FS & FSLP Series

Pivoting & Removable Chute (2')



FS & FSLP Series

Pivoting & Removable Chute (2' + 4')



FS & FSLP Series

Pivoting & Removable Chute
(2' + 4' + 4')



FS Series

Quick Change Funnel Adapter For
4''- 8''-12'' PVC Hose



FSLP Series

Quick Change Funnel Adapter For
4''- 8''- 12'' PVC Hose



RC Series

Quick Change Funnel Adapter For
4''- 8''- 12'' PVC Hose

How the Crete Hawg helped improve safety and productivity

Customer: Scituate Plant, Marshfield MA

Scituate is a manufacturer of all types of precast products, they say "if you can draw it, we can build it."

Challenges: Old processes were no longer working and needed to find ways to increase plant safety, improve manufacturing efficiency, maintain product consistency, and maximize labor.

Solution: Crete Hawg Remote-Controlled Concrete Pouring Bucket.

Results:

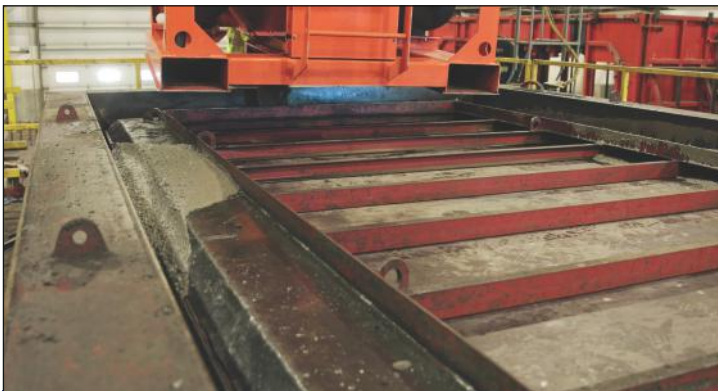
- Safer. Worker operates bucket using remote control and is not tethered to bucket.
- Less labor and time required to get bucket where you are pouring.
- Controls flow. Remote control allows worker, whether it is a narrow or wide channel, to maintain flow consistency so there is no segregation.
- Low maintenance. Remote uses 2 AA batteries. Charge with air one time and you get 100 yards out of it before next charge.



Greg Bonney Foreman, Scituate Marshfield, MA
"We initially bought one bucket and were amazed at how efficient it was, and we went and got a second one to increase efficiency."



Charging the Crete Hawg



Crete Hawg in action



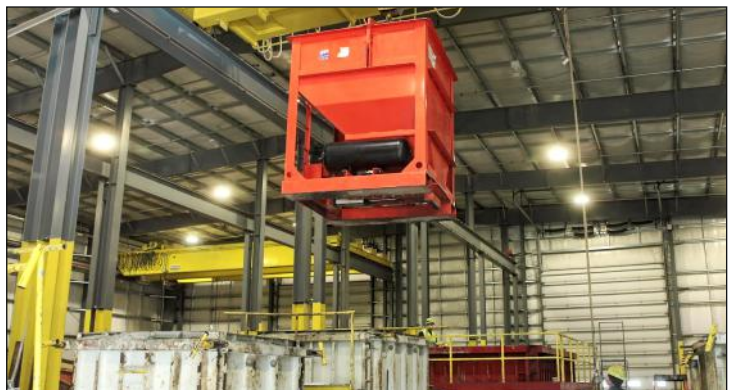
Above- Crane operator moving the Crete Hawg into position to pour forming. Below, bucket transport



Flow consistency



Remote control

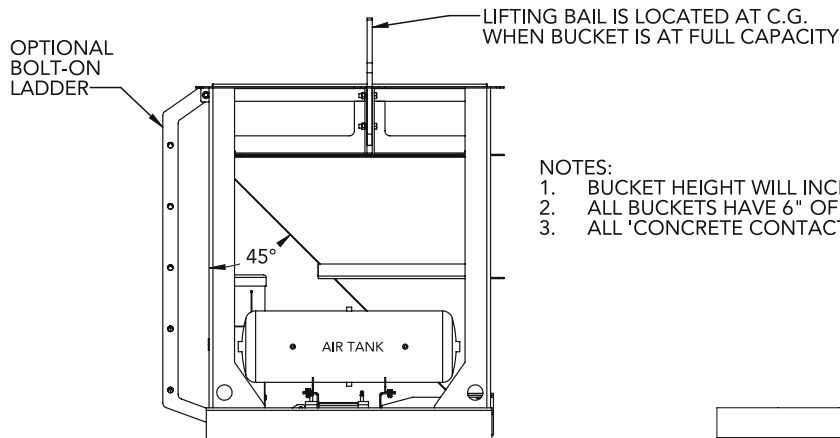
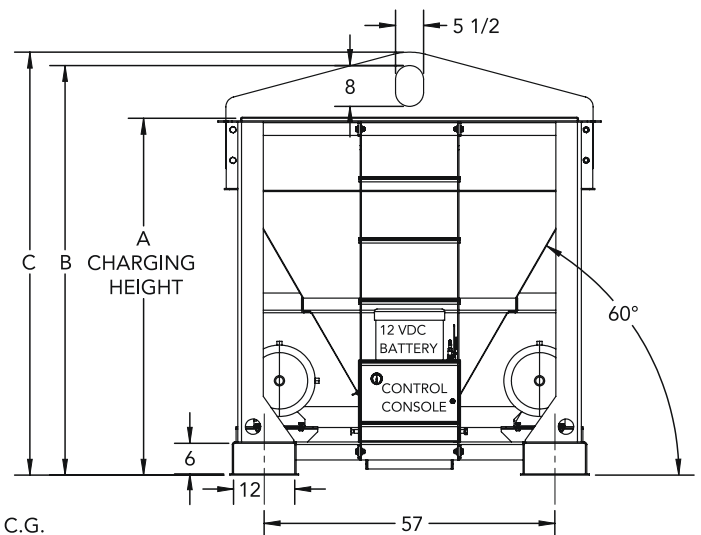
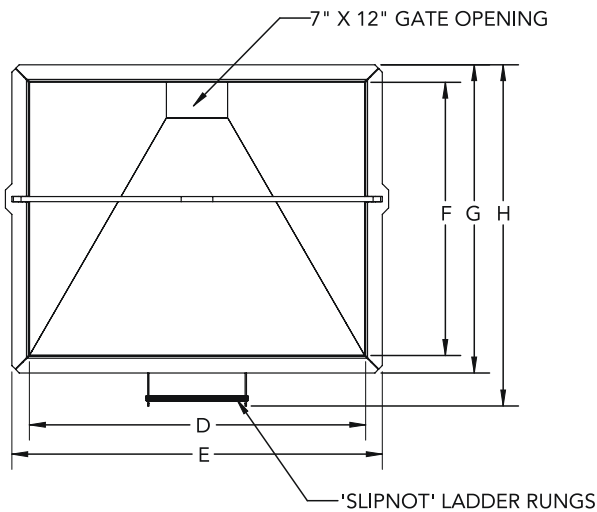




FS Series Machine Diagrams

CAPACITY CU. YD.	A	B	C	D	E	F	G	H	EMPTY WEIGHT
1.0	54	64 1/8	66 3/4	59 7/8	66 3/4	48 1/2	55 3/8	62	2100
1.5	63 1/2	73 3/4	76 1/2	65 3/4	72 1/8	53 5/8	60 1/2	67	2300
2.0	70	80 1/4	83	65 3/4	72 1/8	53 5/8	60 1/2	67	2500
2.5	74 1/4	85 1/2	88 1/4	65 3/4	72 1/8	65 1/4	72 1/8	78	2600
3.0	80 3/4	91	93 3/4	65 3/4	72 1/8	65 1/4	72 1/8	78	2700
3.5	86 1/4	96 1/2	99 1/4	65 3/4	72 1/8	65 1/4	72 1/8	78	2800
4.0	91 3/4	102	104 3/4	65 3/4	72 1/8	65 1/4	72 1/8	78	2900

DIM APPROXIMATE TO NEAREST 1/8"



NOTES:

1. BUCKET HEIGHT WILL INCREASE APPROXIMATELY 12" WITH ELEPHANT TRUNK OPTION
2. ALL BUCKETS HAVE 6" OF FREEBOARD DESIGNED IN FOR SCC
3. ALL 'CONCRETE CONTACT' STEEL IS ABRASION RESISTANT

WELDING	MACH	DRILL	SHAPING	CUTTING
FAB	MACHINING	CUTTING		
GENERAL TOLERANCES EXCEPT AS NOTED				
FRACTIONAL	DECIMAL	ANGULAR DEG		
$X \pm 1/16$	$X.X \pm 0.030$ $X.XX \pm 0.015$ $X.XXX \pm 0.005$	$\pm 1.0^\circ$		

PROPRIETARY AND CONFIDENTIAL
THE INFORMATION CONTAINED
IN THIS DRAWING IS THE SOLE
PROPERTY OF NEW HAMPTON
METAL FABRICATION. ANY
REPRODUCTION IN PART OR AS
A WHOLE WITHOUT THE WRITTEN
PERMISSION OF NEW HAMPTON
METAL FABRICATION IS
PROHIBITED.

DRAWN BY:
BRANDON

DATE:
05/03/23

WEIGHT:
2367.38 LBS

JOB NO:

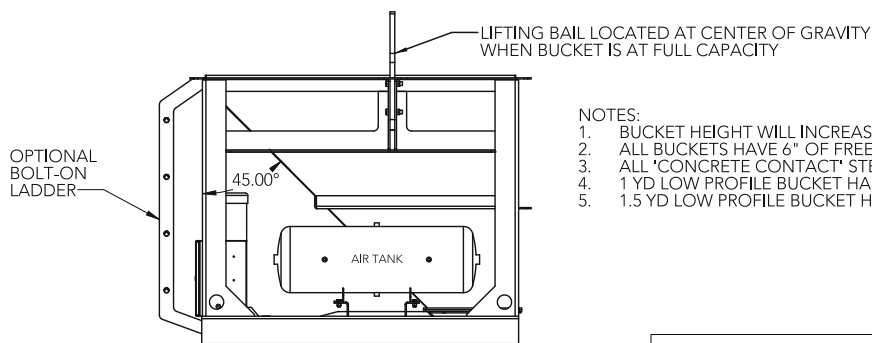
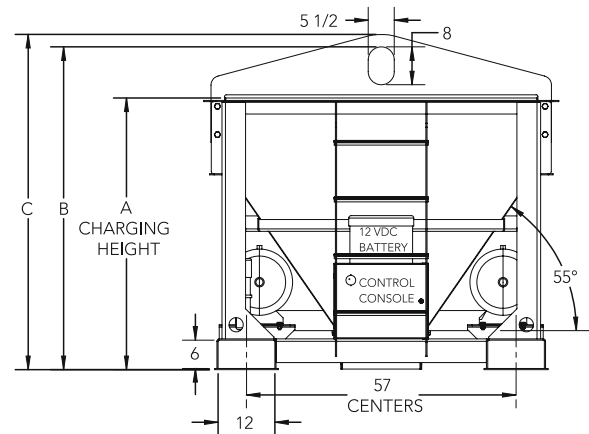
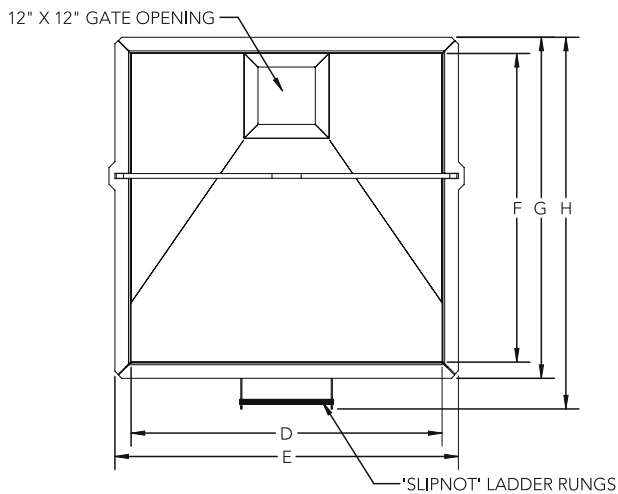
REVISIONS				
REV.	ECR	CHANGE	BY	DATE
AFINITAS FORMING SYSTEMS DIVISION				
928 WEST MILWAUKEE NEW HAMPTON, IOWA 50659 1701 MOLER ROAD COLUMBUS, OHIO 43207				
CRETE HAWG BUCKET SPECIFICATIONS FOR FS SERIES "FLAT SIDE" OFF CENTER DISCHARGE				
SHEET: 1 OF 1	SIZE: 1:24	SIZE: B	DWG NO: PD-HD-1033	REV.



FSLP Series Machine Diagrams

CAPACITY CU. YD.	A	B	C	D	E	F	G	H	EMPTY WEIGHT
1.0	39 3/16	50	52 5/8	65 3/4	72 5/8	65 1/4	72 1/8	78 5/8	2400
1.5	50	60 7/8	63 5/8	65 3/4	72 5/8	65 1/4	72 1/8	78 5/8	2500
2.0	58 1/2	69 1/4	71 7/8	65 3/4	72 5/8	65 1/4	72 1/8	78 5/8	2600
2.5	64	74 3/4	77 3/8	65 3/4	72 5/8	65 1/4	72 1/8	78 5/8	2700
3.0	68 1/2	79 1/8	81 3/4	65 3/4	72 5/8	65 1/4	72 1/8	78 5/8	2800
3.5	74	84 5/8	87 1/4	65 3/4	72 5/8	65 1/4	72 1/8	78 5/8	2900
4.0	79 1/2	90 1/8	92 3/4	65 3/4	72 5/8	65 1/4	72 1/8	78 5/8	3000

DIM APPROXIMATE TO NEAREST 1/8"



- NOTES:
1. BUCKET HEIGHT WILL INCREASE APPROXIMATELY 12" WITH ELEPHANT TRUNK OPTION
 2. ALL BUCKETS HAVE 6" OF FREEBOARD DESIGNED IN FOR SCC
 3. ALL 'CONCRETE CONTACT' STEEL IS ABRASION RESISTANT
 4. 1 YD LOW PROFILE BUCKET HAS 31° SLOPE ON FRONT FACE
 5. 1.5 YD LOW PROFILE BUCKET HAS 38° SLOPE ON FRONT FACE

WELDING	MACH	DRILL	SHAPING	CUTTING	PROPRIETARY AND CONFIDENTIAL THE INFORMATION CONTAINED IN THIS DRAWING IS THE SOLE PROPERTY OF NEW HAMPTON METAL FABRICATION. ANY REPRODUCTION IN PART OR AS A WHOLE WITHOUT THE WRITTEN PERMISSION OF NEW HAMPTON METAL FABRICATION IS PROHIBITED. DRAWN BY: BALLWEG DATE: 2/19/19 WEIGHT: 2449.26 LBS JOB NO:
FAB	MACHINING		CUTTING		
GENERAL TOLERANCES EXCEPT AS NOTED					
FRACTIONAL	DECIMAL		ANGULAR DEG		
X ± 1/16	X.X ± 0.030 X.XX ± 0.015 X.XXX ± 0.005		± 1.0 °		

REVISIONS				
REV.	ECR	CHANGE	BY	DATE
A		INCREASED DIM A, B & C ON 2 YD BUCKETS BY 1"	WALKER	8/14/19



AFINITAS


AFINITAS
FORMING SYSTEMS DIVISION

928 WEST MILWAUKEE NEW HAMPTON, IOWA 50659 1701 MOLER ROAD COLUMBUS, OHIO 43207

CRETE HAWG BUCKET SPECIFICATIONS FOR
FSLP SERIES "FLAT SIDE -LOW PROFILE"
OFF CENTER DISCHARGE

SHEET:	SIZE:	DWG. NO.:	REV.
1 OF 1	1:32	B PD-HD-0925	



WELDING	MACH	DRILL	SHAPING	CUTTING	PROPRIETARY AND CONFIDENTIAL THE INFORMATION CONTAINED IN THIS DRAWING IS THE SOLE PROPERTY OF NEW HAMPTON METAL FABRICATION. ANY REPRODUCTION IN PART OR AS A WHOLE WITHOUT THE WRITTEN PERMISSION OF NEW HAMPTON METAL FABRICATION IS PROHIBITED. DRAWN BY: BRANDON DATE: 05/03/23 WEIGHT: 2682.91 LBS JOB NO:	 AFINITAS FORMING SYSTEMS DIVISION 928 WEST MILWAUKEE NEW HAMPTON, IOWA 50659 1701 MOLER ROAD COLUMBUS, OHIO 43207		CRETE HAWG BUCKET SPECIFICATIONS FOR RC SERIES "ROUND" CENTER DISCHARGE		REV.
FAB	MACHINING		CUTTING							
GENERAL TOLERANCES EXCEPT AS NOTED										
FRACTIONAL	DECIMAL		ANGULAR DEG							
X ± 1/16	X.X ± 0.030 X.XX ± 0.015 X.XXX ± 0.005		± 1.0 °			SHEET: 1 OF 1	SCALE: 1:24	SIZE B	DWG NO: PD-HD-1034	



Forming Systems For Every Application



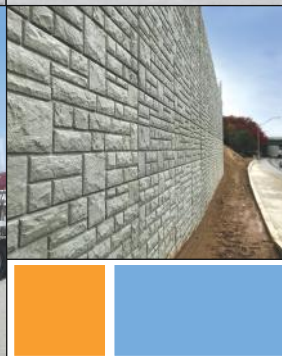
Manhole Forming Systems

Monolithic Straight and Extended Bases, Risers, Cones, Slab Tops and more



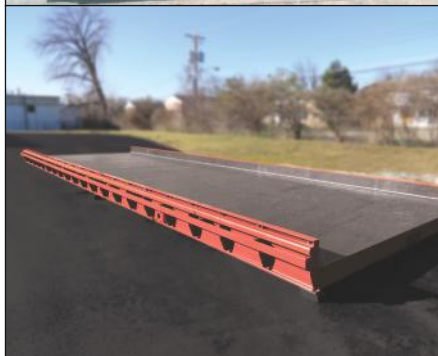
Box Forming Systems

Monolithic Straight and Extended Bases, Risers, Cones, Slab Tops and more



Transportation Forming Systems

- Arch/Bridge
- Median Barriers
- For industrial or commercial applications
- Curbing
- Retaining and Sound Walls
- Headwalls



Flatcasting Tables and Side Rails

Simplify wall panel, foundation, slab panel production

Contact the Afnitas Forming Systems Sales Team

to learn more.

Phone (641) 394-4111

or email rfq@afnitas.com



Accessories & More

Additional Products

Afinitas brings you the industry's best formwork and a whole lot more.

Afinitas is the premier platform of precast concrete infrastructure equipment and services.

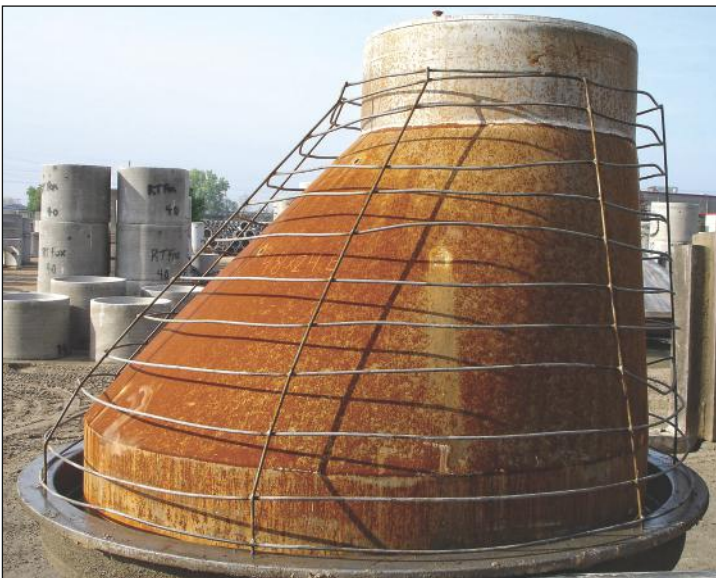
With decades of experience in the pipe and precast concrete markets, we provide manufacturers around the world with the gold standard in precast concrete product production equipment, highly engineered drycast and wetcast forms and a wide variety of concrete accessories.

Our combined strengths mean more concrete machinery engineering resources, manufacturing know-how and pipe and precast concrete industry experience is ready to help you create the ideal production systems for your infrastructural concrete product needs.



SmartSet™ Curing Systems

- Next-gen and basic direct-fired steam generators
- Controls and airflow systems
- Misting and drying components
- Kilns, piping, moving floors
- Dedicated tech team and service



Cone Cages from Haala Industries brand



Lifting Anchors, Fixation Inserts and other precast accessories



Crete Hawg

Remote-Controlled Concrete Pouring Bucket

Equipment & Automation



Forming Systems

Concrete Accessories



Intelligent Infrastructure Solutions
Visit www.afinitas.com to learn more.

Afinitas Forming Systems Division

Iowa

928 W Milwaukee
New Hampton, IA 50659
Phone: 641-394-4111
Fax: 641-394-4542
rfq@afinitas.com

Ohio

1701 Moler Road
Columbus, OH 43207
Phone: 614-444-2184
rfq@afinitas.com



Intelligent Infrastructure Solutions

Afinitas is a global, comprehensive and customer-oriented equipment, automation, forming and accessories platform for precast concrete and infrastructural products.

Afinitas Forming Systems Division:

928 W. Milwaukee | New Hampton, IA 50659 USA | +1 641-394-4411 | rfq@afinitas.com | www.afinitas.com