



Kits for Converting Pipemaster Model 206

Hydraulic Systems to Series 2000 Style

Hawkeye has Pipemaster kits available that can be used to convert older unloader's hydraulic systems to that used on the new Model 2206 Pipemaster. The simplified system is shown on the attached photos. The kits shown are for the Model 100. Kits for the Model 206 are basically the same, except they are doubled. The Series 2000 has a manifolded cylinder top/speed control valve/shock cushioning relief valve as the "heart" of its design. This design eliminates 26 hydraulic joints, potential leak points, and greatly simplifies the system.

Kits are offered in three sizes. A new Model 2206 Manual is included with all kits. This manual contains parts information and updated operating instructions.

Pipemaster Kit #4

Contains the minimum required to convert. It contains the new Series 2000 manifolded cylinder top/valve body/shock cushioning relief valves. Valves are with new relief valves but require the inner components of your present valves. Your present right-hand cylinder components would be installed on the new cylinder tops. Cylinder repair kits are included to bring the cylinders to like-new condition. All fittings and hoses are included to bring the hydraulic system up to Series 2000 performance.

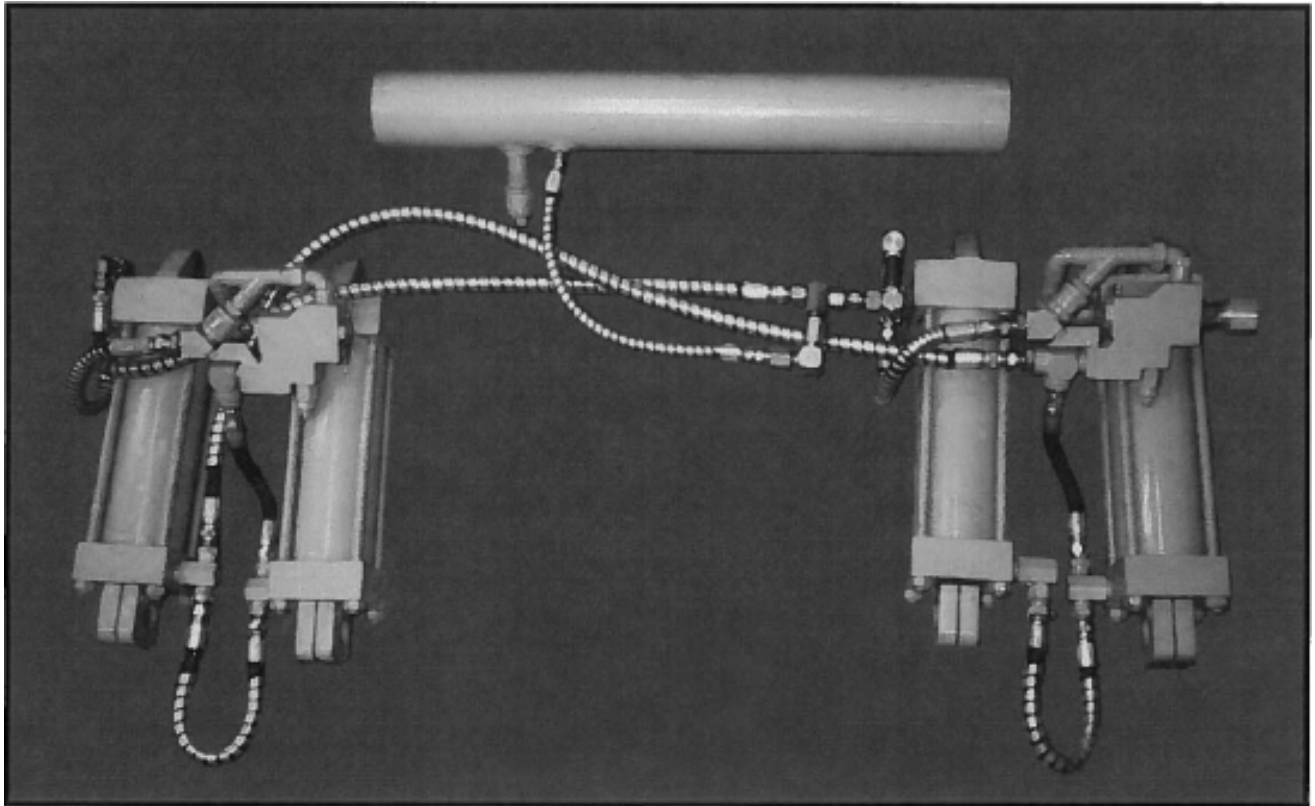
Pipemaster Kit #5

Includes the complete "heart" of the Series 2000 hydraulic system. Right-hand cylinders are ready to install as is with all components in place. Fittings and hoses to connect to existing left-hand cylinders are included.

Pipemaster Kit #6

Includes an all new Series 2000 hydraulic system. Old Model 206 cylinders can be removed and Kit #3 can be installed to bring your Pipemaster to Series 2000 performance.

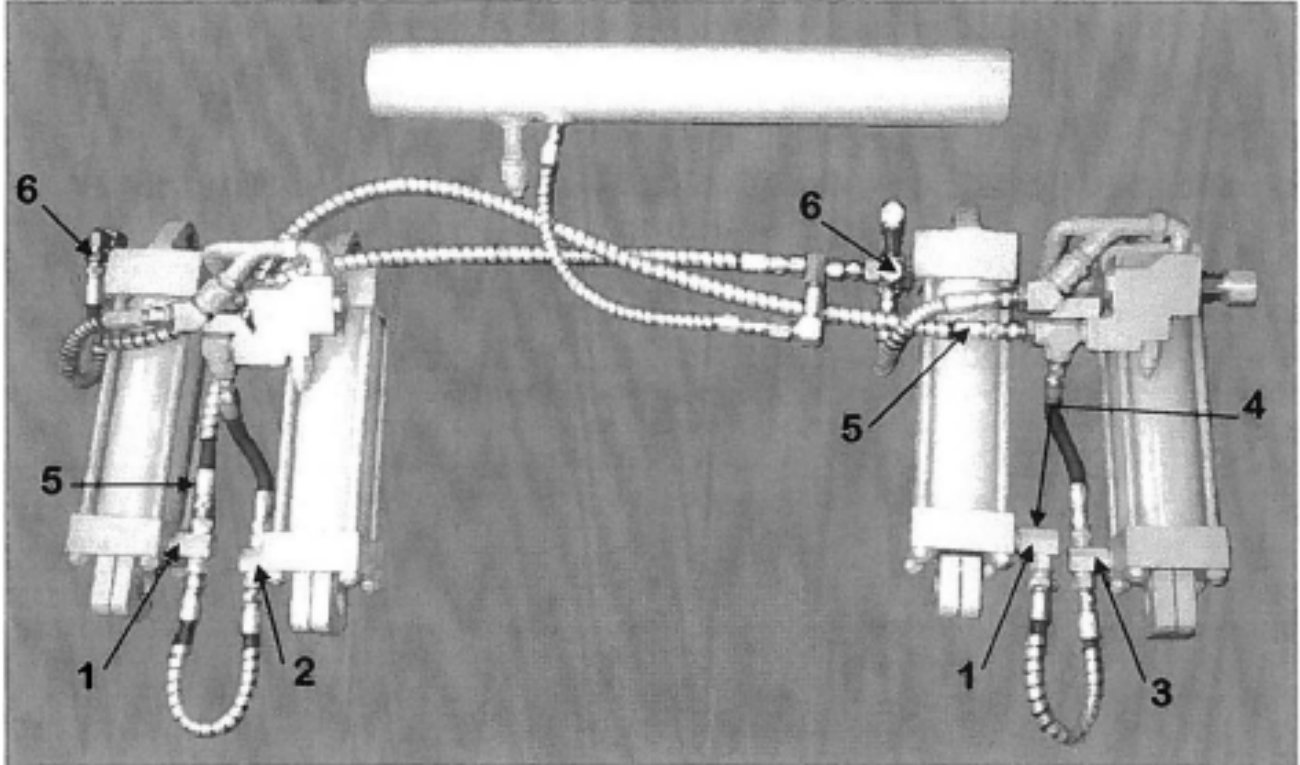
These kits can also be used to gradually upgrade your units when repairs are needed. If you own multiple units you can put the replaced parts into stock for future use. Parts used in kits are all standard Series 2000 parts.



The Model 2206 Hydraulic: System

Any one of the three new Series 2000 conversion kits will make your old Model 206 look like the new Model 2206 pictured above. See the photos of the Model 100 kits. Kits are basically the same, except they are doubled for the Model 206.

Installation of Kit to Convert Pipemaster Model 206 Unloader to Series 2000 Hydraulics



1. Remove old relieve valves leaving existing $\frac{3}{4}$ " to $\frac{1}{2}$ " tees on left-hand cylinders; both banks.
2. Replace old $\frac{3}{4}$ " tee fitting on right cylinder of left bank with new $\frac{3}{4}$ " x $\frac{1}{2}$ " tee.
3. Replace old $\frac{3}{4}$ " tee on right cylinder of right bank with $\frac{3}{4}$ " to $\frac{1}{2}$ " elbow.
4. Connect new $\frac{1}{2}$ " hose to existing $\frac{3}{4}$ " to $\frac{1}{2}$ " tee on left cylinder of right bank.
5. Connect new long $\frac{1}{2}$ " hose from left cylinder on left bank to control valve on right bank.
6. Remove old relief valve hoses from upper swivel joints and plug with special plugs from kit.

Kits for Converting Pipemaster Model 100

Hydraulic Systems to Series 2000 Style

Pipemaster has kits available that can be used to convert older unloader's hydraulic systems to that used on the new Model 2100 Pipemaster. The simplified system is shown on the attached photos. The Series 2000 has a manifolded cylinder top/speed control valve/shock cushioning relief valve as the "heart" of its design. This design eliminates 21 hydraulic joints, potential leak points, and greatly simplifies the system.

Kits are offered in three sizes. A new Model 2100 Manual is included with all kits. This manual contains parts information and updated operating instructions.

Pipemaster Kit # 1

Contains the minimum required to convert. It contains the new Series 2000 manifolded cylinder top/valve body/shock cushioning relief valve. Valve is with new relief valve but requires the inner components of your present valve. Your present right-hand cylinder components would be installed on the new cylinder top. A cylinder repair kit is included to bring the cylinder to like new condition. All fittings and hoses are included to bring the hydraulic system up to Series 2000 performance.

Pipemaster Kit #2

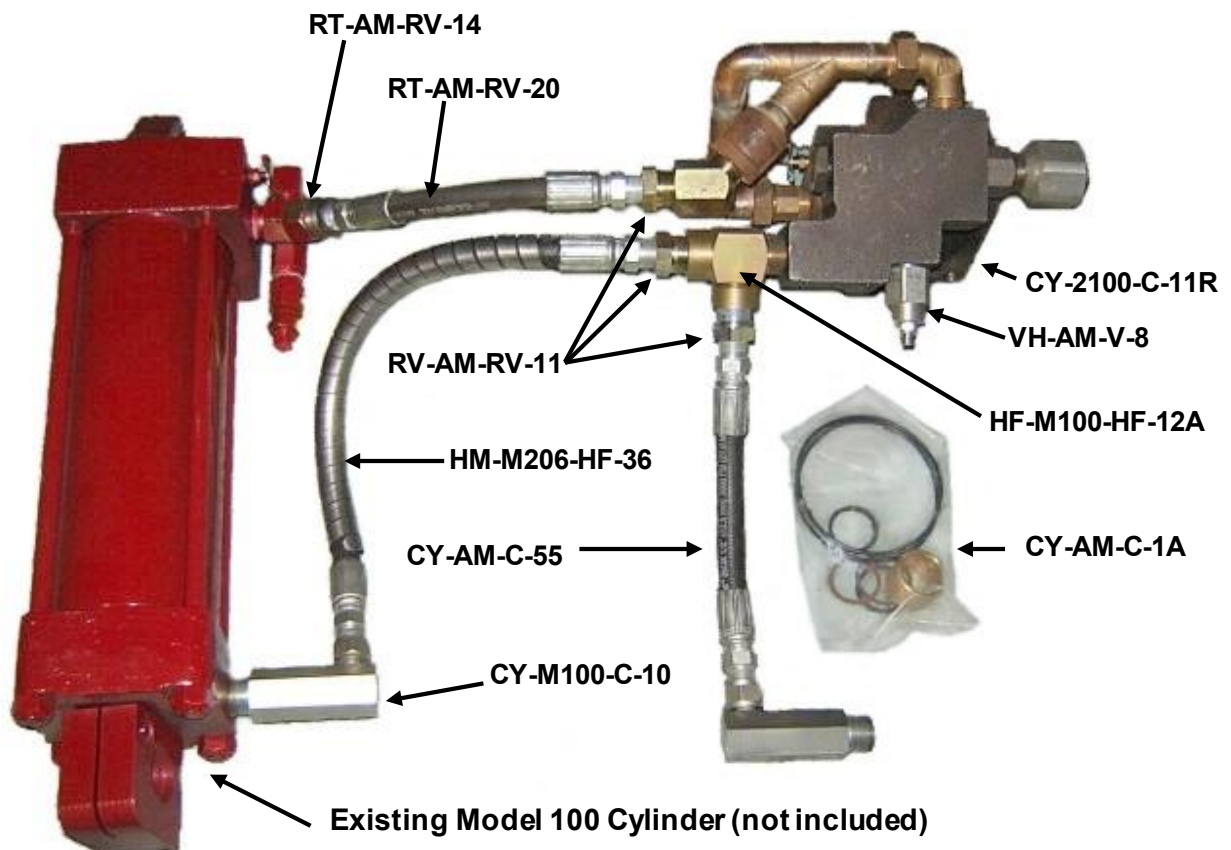
Includes the complete "heart" of the Series 2000 hydraulic system. Right-hand cylinder is ready to install as is with all components in place. Fittings and hoses to connect to existing left-hand cylinder are included.

Pipemaster Kit #3

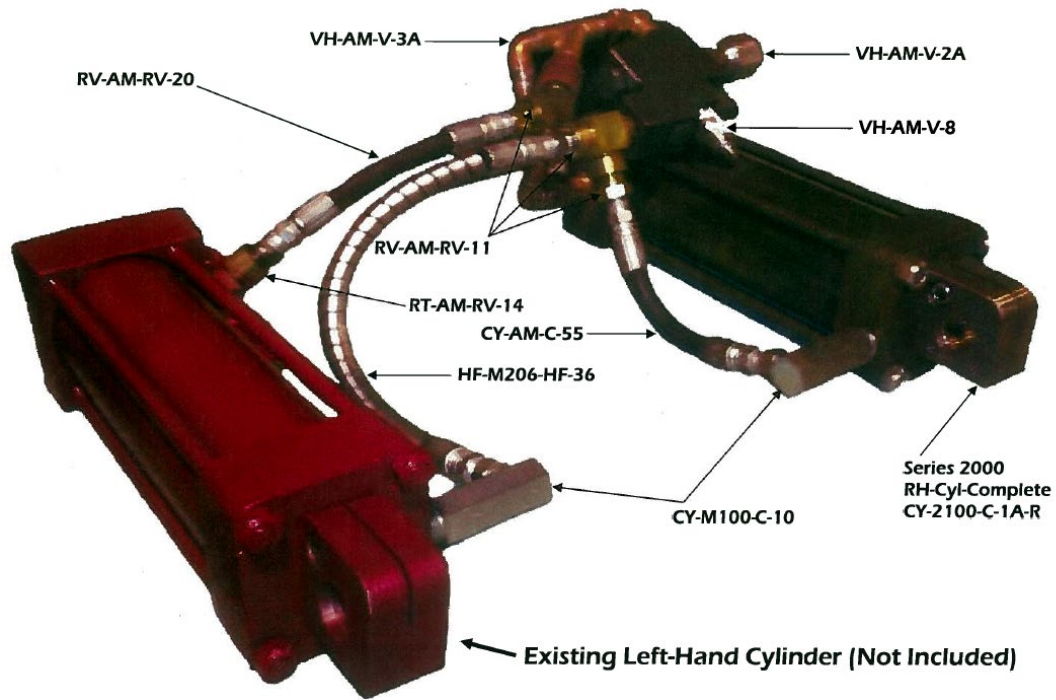
Includes an all new Series 2000 hydraulic system. Old Model 100 cylinders can be removed and Kit #3 can be installed to bring your Pipemaster to Series 2000 performance.

These kits can also be used to gradually upgrade your units when repairs are needed. If you own multiple units you can put the replaced parts into stock for future use. Parts used in kits are all standard Series 2000 parts.

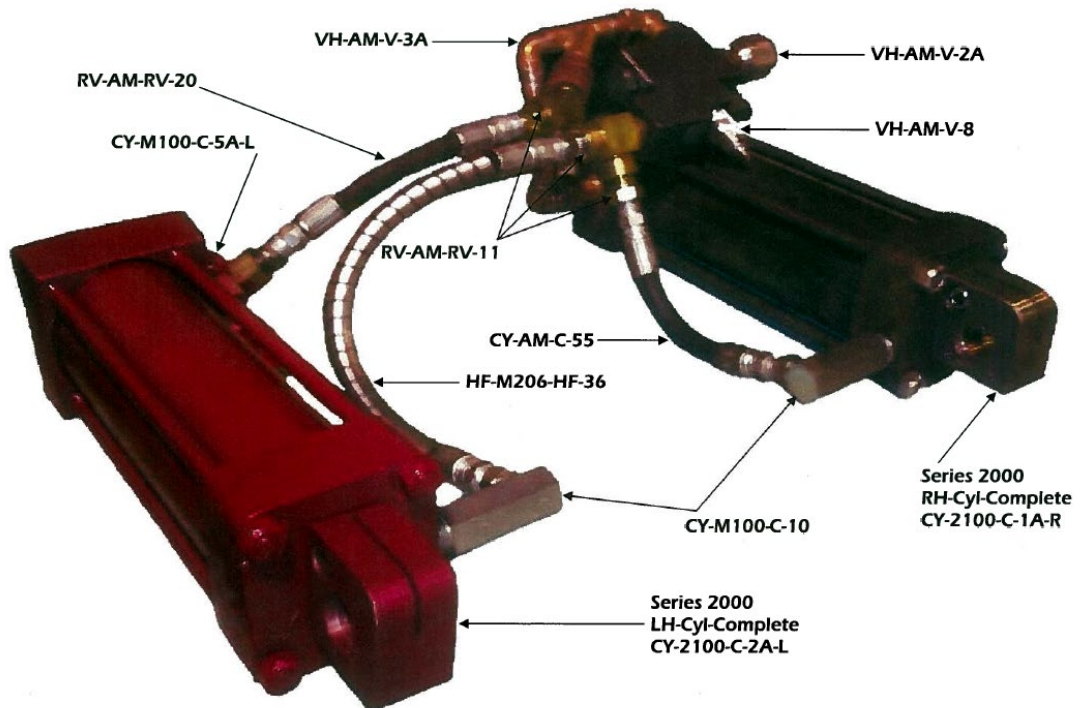
Pipemaster Kit #1



Pipemaster Kit #2

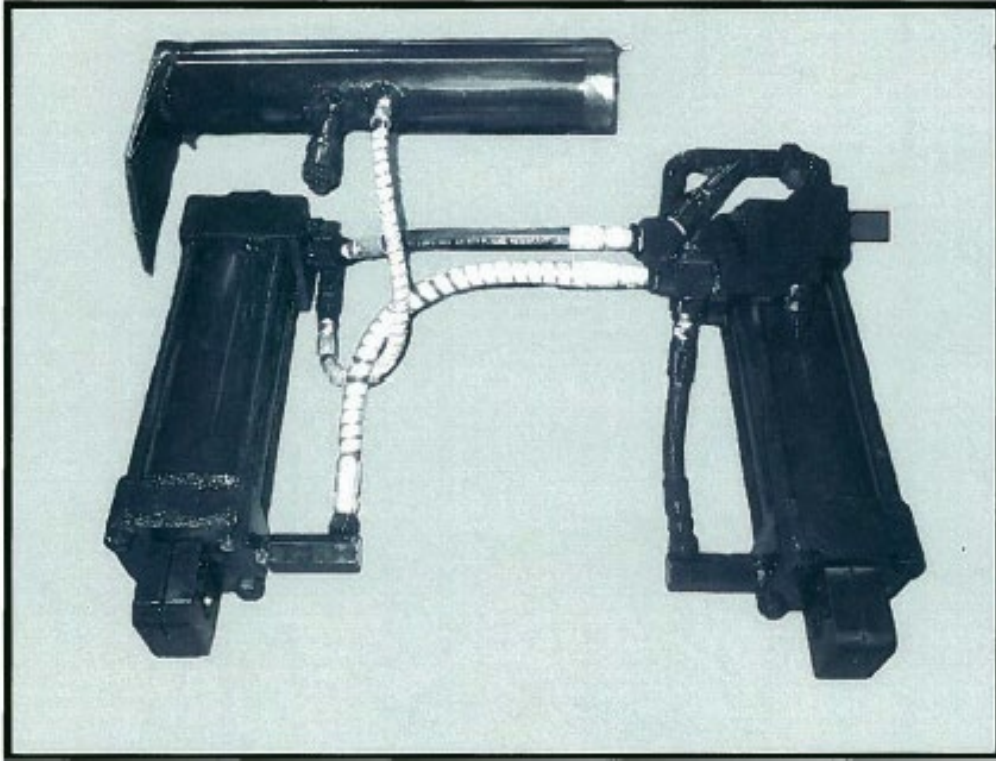


Pipemaster Kit #3



The Model 2100 Hydraulic: System

Any one of the three new Series 2000 conversion kits will make your old Model 100 look like the new Model 2100 pictured below.



CONTACT US FOR A QUOTE ON YOUR PIPEMASTER CONVERSION
1-319-394-2240 or Hawkeyeparts@hpct.com