



Manhole Riser Forming Systems



Riser Forms Engineered to Last

- One- and Two-Piece Forms
- Variety of Sizes and Options

Heavy steel construction designed for strength, durability and performance

Afinitas is known for bringing together the top engineering and manufacturing expertise in the industry to build best-in-class precast forming systems. Our wide range of quality products are backed by knowledgeable and responsive customer sales and manufacturing team members who are there to assist you throughout the life of your form. And to that point, our forms are built to last. We combine heavy-duty steel with an innovative approach to manufacturing that will ensure we can help you take your business where you want to grow.

Manhole products are a core competency of the Afinitas team. We have been trusted for decades to engineer forms for a wide variety of manhole products, including:

- Eccentric Cone Forms
- Concentric Cone Forms
- Slap Top, Transition Slab, Base Slab Forms
- Extended and Straight Base Forms
- Riser Forms
- Drop Base and Drop Riser Forms
- Single Pour Grade Ring Forms
- Battery Grade Ring Forms
- Manhole Joint Rings



Manhole Cone Form



Manhole Base Form



Manhole Riser Form

 **Afinitas is your source**
for Wetcast Forming Systems.

Contact our team at
+1 641-394-4111
or email rfq@afinitas.com

Two-Piece Forms

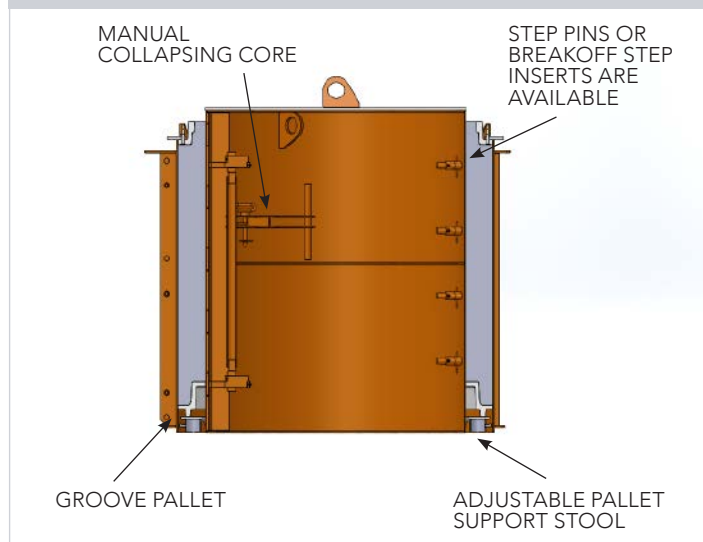
Risers are precast concrete extensions installed with other components to raise the height of the overall structure to reach grade level.

For riser products that need to be cast short or tall, a two-piece riser form is a perfect solution. We design these sections to fit together precisely so you can be assured of a quality finished product.

The Afinitas Advantage

- Heavy steel construction designed for strength, durability and performance
- Diameters 24" through 144"
- Two-piece form design with toggle clamps, seam bars and alignment pins
- Mechanical collapsing inner core

Section View Manhole Riser Form

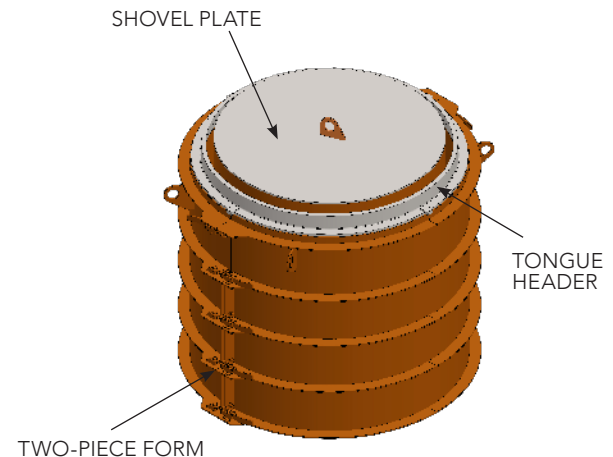


One-Piece Form

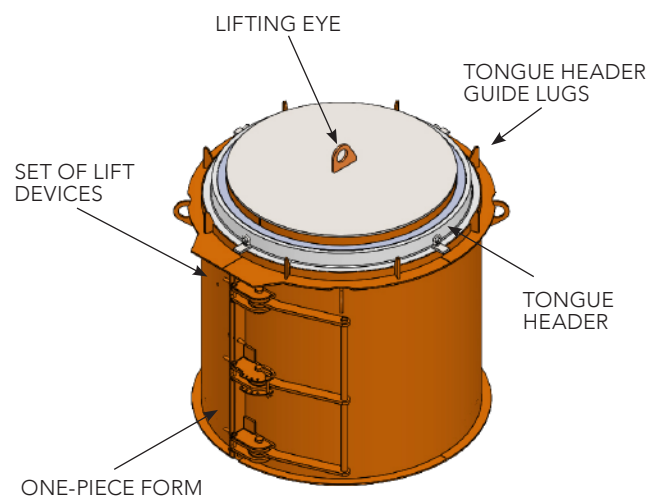


Two-Piece Form

Two-Piece Form



One-Piece Form





Manhole Riser Quick Strip Options

Why Choose A "Quick Strip" Option?

Available for either One- or Two-Piece Forms

With Quick Strip, there is no need to handle the inner core or the optional bolt down core top. Instead, the inner core and step pins (if required) are collapsed and retracted by simply moving the Quick Strip levers from right to left at the bottom of the sub-base. This simple, easy, and safe process reduces crane picks saving time and money on the job site.



Riser: Two-Piece Form with Quick Strip Sub-Base (shown with optional fork truck tubes inside the sub-base)



Standard Fork Truck Pockets "Underneath" the Quick Strip Sub-Base

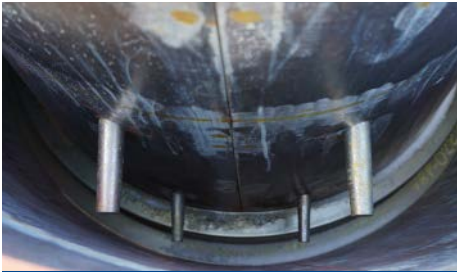


Riser: One-Piece Form with Quick Strip Sub-Base (shown with optional fork truck tubes inside the sub-base)



Option: Bolt Down Shovel Plate (Quick Strip)

Afinitas Has the Options You Need



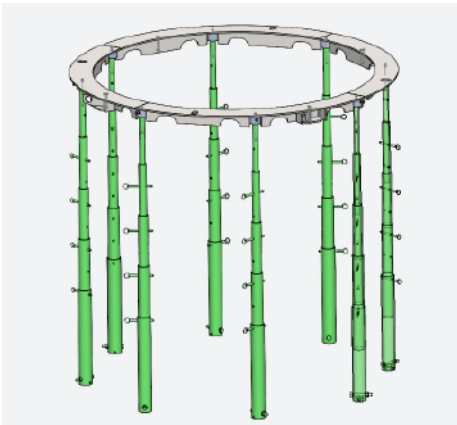
Manual Step Pin Assemblies or Cast-In Plastic Break-Off Step Inserts (several makes/models to choose from)



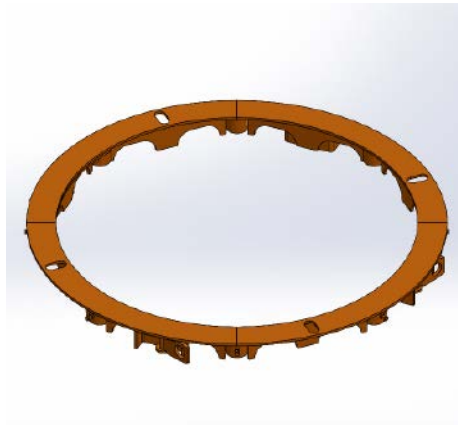
Option: Shovel Plate with Access Panel (Quick Strip)



Option: Fork Truck Pockets "Inside" the Quick Strip Sub-Base



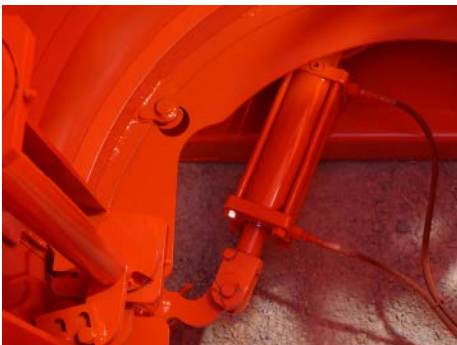
Option: Adjustable Pallet Stool with Leg Kit. NOTICE! Leg kit must be welded to the form sub-base.



Adjustable Pallet Support Stool with optional Swivel Lifting Eyes shown (standard stool comes with 2½" diameter receiver pipe for customers 2" sch. 40 pipe legs)



Adjustable Flat Pallet Support Stool (standard stool comes with 2½" diameter receiver pipe for customers 2" sch. 40 pipe legs)



Hydraulic Core Collapsing (inside core view) 24" – 72" Diameter Cores with Quick Strip Sub-Base

Hydraulic Step Pins available for 48" – 60" – 72" Diameter Cores with Quick Strip Sub-Base



Hydraulic Core (outside view showing hydraulic connections)

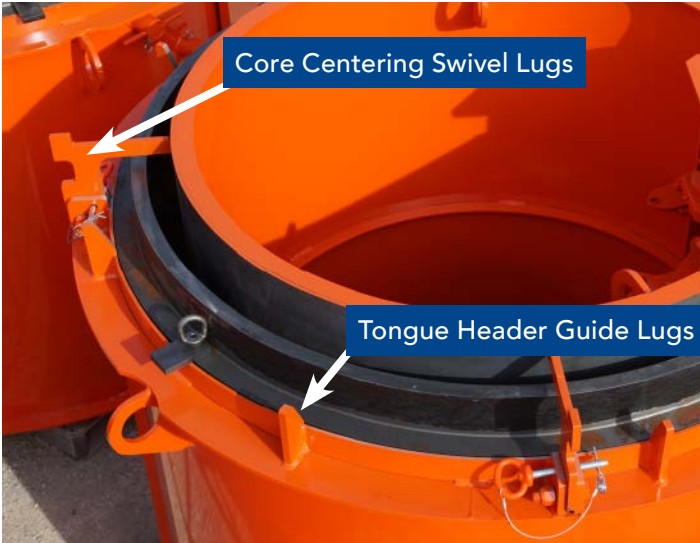


Quick Strip Sub-Base Top Lever Controls Manual Step Pin Movement Plus Bottom Lever Controls Manual Core Collapse

Available Bolt Down Shovel Plate (offered on Hydraulic Core Collapsing/Hydraulic Steps)



Manhole Riser Forming Options

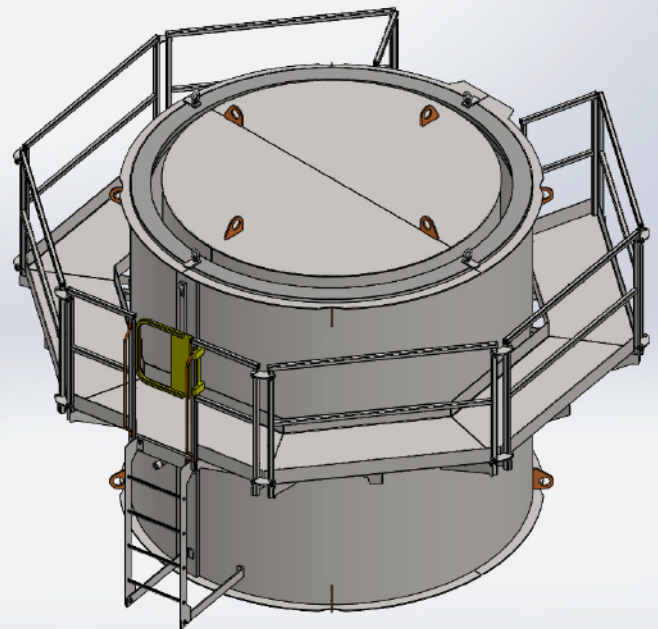


Vibrator Mounting Brackets (several makes/models to choose from). Air or electric vibrators are also available.



Ganged Form Latch Assembly for Two-Piece Forms and Roll Back Form Doors. Saves time opening and closing vs individual form toggle clamps, especially for taller forms where a ladder may be needed.

Manual Lift Hole Blockout Pins or Lift Insert Assemblies (several makes/models to choose from)



Option: Safety Catwalks Available on One Side; Two Sides or Full Catwalk (Full catwalk shown on a one-piece form)



Why Choose the Quick Strip – Roll Back Options?

With Quick Strip, there is no need to handle the inner core or the optional bolt down core top. Instead, the inner core and step pins (if required) are collapsed and retracted by simply moving the Quick Strip levers from right to left at the bottom of the sub-base. This simple, easy, and safe process reduces crane picks saving time and money on the job site.

With the Roll Back form the form doors are manually rolled open/close. The manufacturing team does not have to handle the outer form with an overhead hoist. This makes the process simpler and safer.

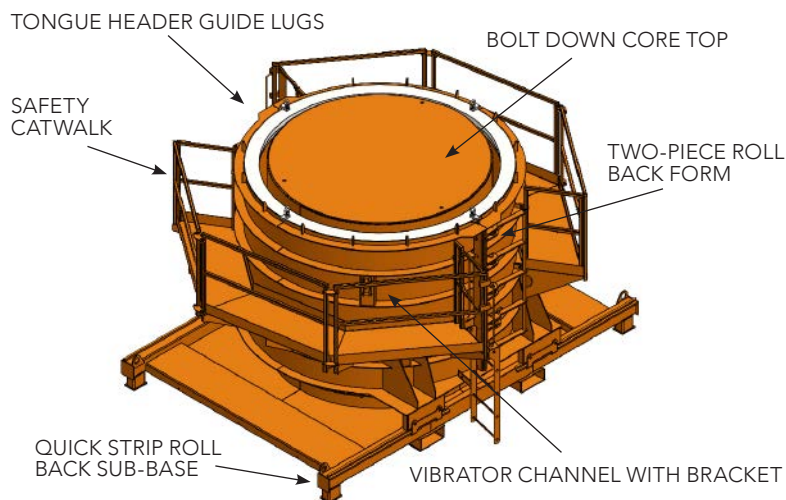


Quick Strip Sub-Base (Top lever controls manual step pin movement plus bottom lever controls manual core collapse)

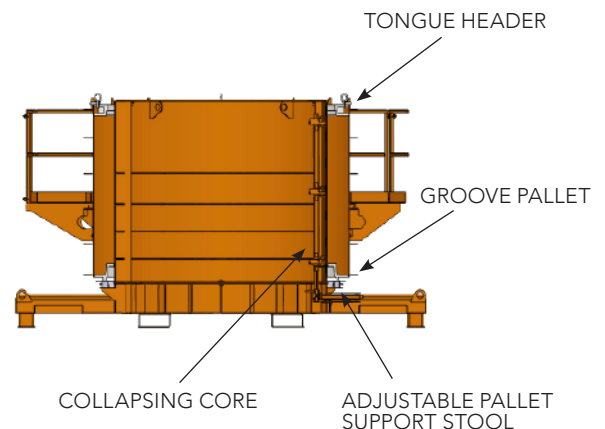


Option: Safety Catwalks Available on One Side or Two Sides

ADDITIONAL FEATURES



SECTION VIEW ADDITIONAL RISER FEATURES



We offer Large Format 84" diameter-plus forming as well as Sub-Base Strip

Available on either One- or Two-Piece Forms

Benefits of Sub-Base Strips

With this option, you can manually collapse the inner core from the underside of the sub-base, without having to handle or rotate the inner core or core top. (Core top is bolted to the top of the core).

- Reduce crane picks saving time and money.
- Simpler and easier: move the Quick Strip lever found at the bottom from right to left to manually collapse the core and the step pins (if required) are manually retracted.
- Safer: The Sub-Base Strip option is safer than traditional methods of form removal. There is no need to handle heavy objects, and there is less risk of accidents.



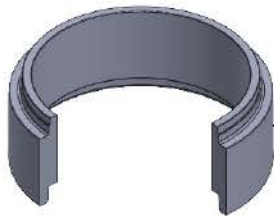
Riser – One-Piece (above) with Sub-Base Strip (below) and Optional Fork Truck Tubes.



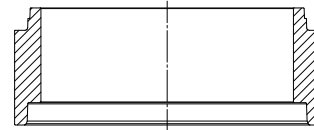


Manhole Riser Stack-Up

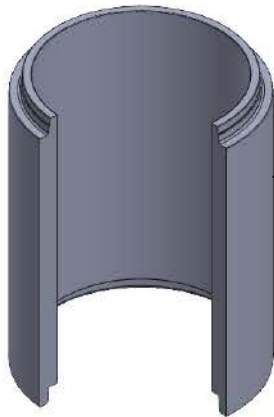
Short and Tall Risers. Risers available in 12" or 16" tall increments.



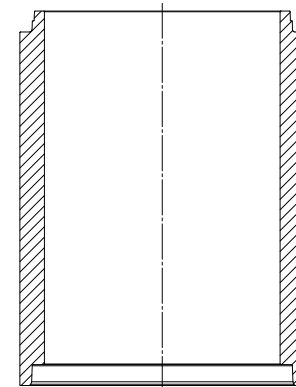
SHORT RISER



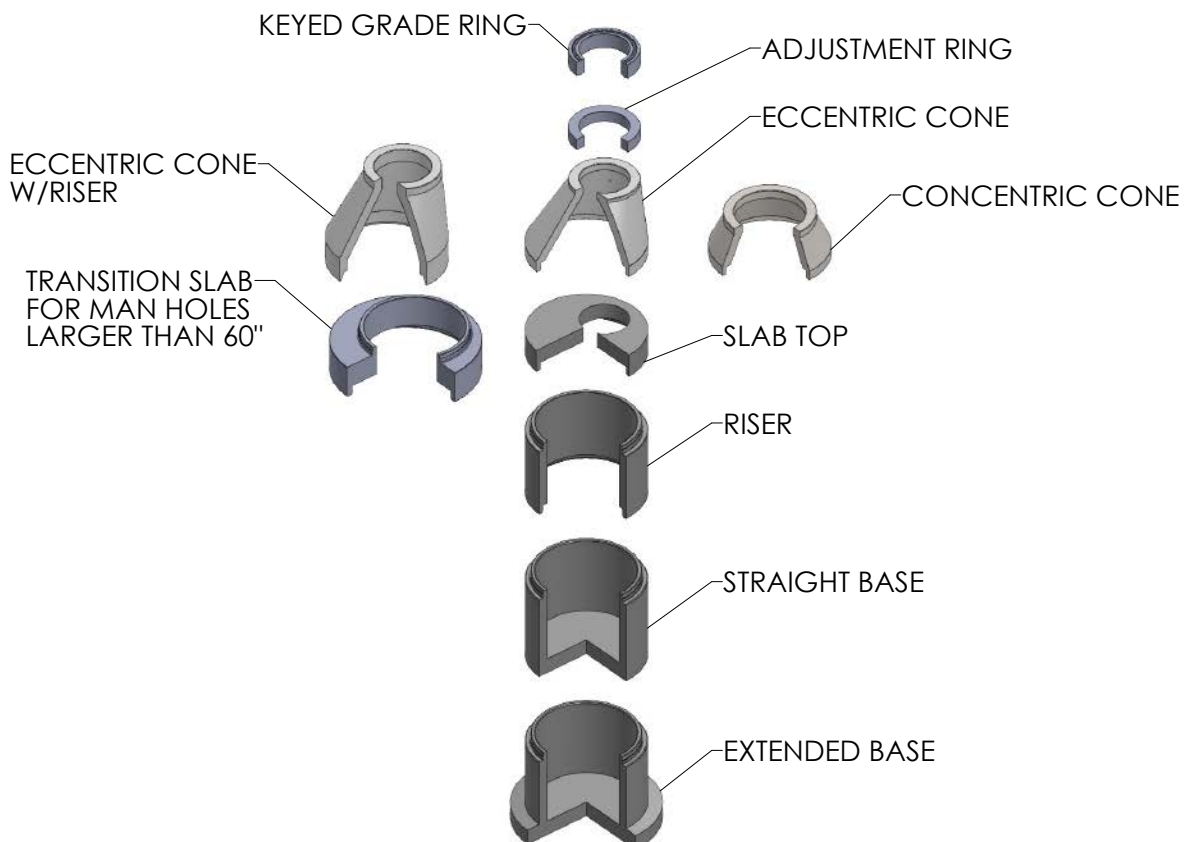
RISER



TALL RISER



RISER



SmartConnect™ Cordless Hydraulic Power System for Collapsible Cores

Precast concrete forms with collapsible cores make it easier to remove the product from the form. However, powering up the hydraulics to retract and expand the core can be a hassle. Typically a large cart carrying a power unit, power cords and hoses must be wheeled to the form. The hoses must be attached to the hydraulics on the form, the unit must be plugged in and once the core moves, everything must be disconnected before the cart can move to the next form. This process not only takes time but it wastes time that could be spent working on multiple forms at once.

Introducing SmartConnect™ *

An Intelligent Bolt-On Power Unit for hydraulic collapsible cores. With SmartConnect™, you have a self-contained hydraulic power unit that is mounted directly on the form. There are no electric carts or cords. The unit is powered by a standard 20 volt cordless drill that uses the same hydraulics to operate the core to open and close.

Benefits of SmartConnect™

- Save time — at least 10 mins. or more per form!
 - No wheeling of carts around the plant
 - No hoses and cords to connect and disconnect
 - No more waiting — all you need is a cordless drill to operate the unit, allowing you to work on many forms at once
 - Ultimately, your strip-out and set-up will go faster
- Increased Safety
 - With no electrical cords strung throughout the plant, tripping hazards are reduced
 - Minimizes potential electrical shock hazards if water is present
- Space Saver
 - Eliminating the bulky cart means more open floor space in an already equipment-packed area
- Flexible
 - Works on AFINITAS forms up to 7' x 7' boxes and manhole form diameters up to 72"
 - Retrofit your existing forms or add to new AFINITAS form purchases
- Quick Payback
 - SmartConnect costs significantly less than a 110V hydraulic cart system
 - When you calculate the productivity gains and reduced safety risks, the system pays for itself in no time (in most cases 3 years or less).

* patent-pending technology



SmartConnect™ is mounted directly on the form to power the collapsible core hydraulics.



The self-contained unit is not dependent on any other equipment except a standard 20V cordless drill.

Watch the SmartConnect™
Cordless Hydraulic Power
System Video



Afinitas brings you the industry's best formwork and a whole lot more.

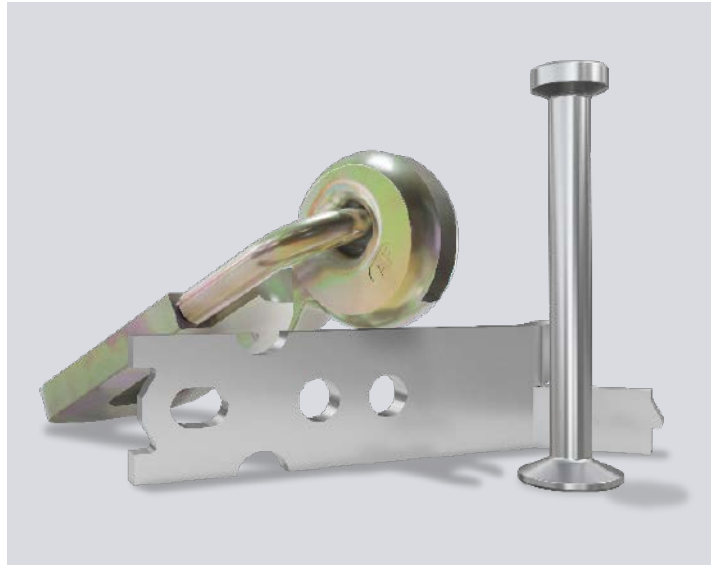
Afinitas is the premier platform of precast concrete infrastructure equipment and services.

With decades of experience in the pipe and precast concrete markets, we provide manufacturers around the world with the gold standard in precast concrete product production equipment, highly engineered drycast and wetcast forms and a wide variety of concrete accessories.

Our combined strengths mean more concrete machinery engineering resources, manufacturing know-how and pipe and precast concrete industry experience is ready to help you create the ideal production systems for your infrastructural concrete product needs.



SmartRoll™ Form Controller - Intelligent Safety Brake reduces form swinging up to 90%.



Lifting Anchors, Fixation Inserts and other precast accessories



Cone Cages from Haala Industries brand



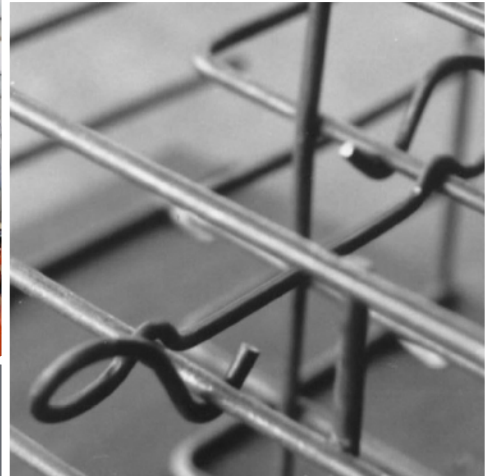


Manhole Riser Forming Systems

Equipment & Automation



Concrete Accessories



Forming Systems



Intelligent Infrastructure Solutions
Visit www.afinitas.com to learn more.

Afinitas Forming Systems Division

Iowa

928 W Milwaukee
New Hampton, IA 50659
Phone: 641-394-4111
Fax: 641-394-4542
rfq@afinitas.com

Ohio

1701 Moler Road
Columbus, OH 43207
Phone: 614-444-2184
rfq@afinitas.com



Intelligent Infrastructure Solutions

Afinitas is a global, comprehensive and customer-oriented equipment, automation, forming and accessories platform for precast concrete and infrastructural products.

Afinitas Forming Systems Division:

928 W. Milwaukee | New Hampton, IA 50659 USA | +1 641-394-4111 | rfq@afinitas.com | www.afinitas.com