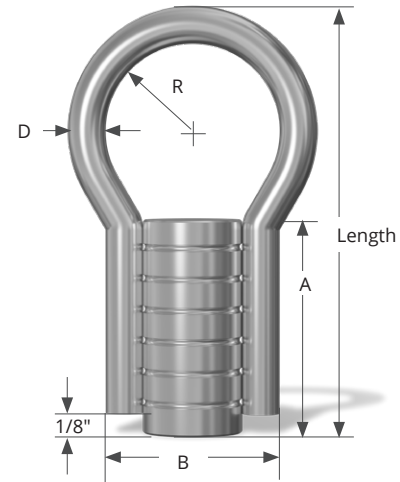


Ferrule Loop Insert

The Ferrule Loop Insert is tapped to accept an NC threaded bolt, providing for fixation to concrete elements.

Proper installation requires the insert to be cast perpendicular to the face of the element, with the opening to the threads level to the face of the element. Any misalignment of the insert will result in a reduction of safe working load capacity.



FI12LZ

Item #	Thread Size	Length	Finish	A	B	D	R	TPI	SWL	Safety Factor	UML/T	Weight (lbs)
Ferrule Loop Insert - Zinc Plated												
FI14LZ	1/4	2 3/4	ZP	1 1/4	1	.243	9/16	20	2000	3:1	6000	.14
FI38LZ	3/8	2 3/4	ZP	1 1/4	1	.243	9/16	16	2000	3:1	6000	.13
FI38LP	3/8	2 3/4	Plain	1 1/4	1	.243	9/16	16	2000	3:1	6000	.13
FI12LZ	1/2	2 3/4	ZP	1 3/8	1 1/8	.243	9/16	13	2000	3:1	6000	.18
FI58LZ	5/8	3 1/2	ZP	1 5/8	1 3/8	.262	13/16	11	2300	3:1	6900	.28
FI34LZ	3/4	3 1/2	ZP	1 5/8	1 4/7	.262	13/16	10	2500	3:1	7500	.31
FI78LZ	7/8	6	ZP	1 5/8	1 3/8	.375	1 3/8	9	5300	3:1	15900	.74
FI1LZ	1	6	ZP	1 5/8	1 3/8	.375	1 3/8	8	5300	3:1	15900	.75
Ferrule Loop Insert - Stainless Steel												
FI14LZSS	1/4	2 3/4	SS	1 1/4	1	.223	5/8	20				.14
FI38LSS	3/8	2 3/4	SS	1 1/4	1	.306	5/8	16	2000	3:1	6000	.13
FI12LSS	1/2	2 3/4	SS	1 3/8	1 1/8	.223	5/8	13	2000	3:1	6000	.18
FI34LSS	3/4	3 1/2	SS	1 5/8	1 5/8	.306	7/8	10	2500	3:1	7500	.31

ZP Zinc Plated
 SS Stainless Steel
 TPI Threads Per Inch
 R Bulb Radius

SWL Safe Working Load
 UML/T Ultimate Mechanical Load in Tension (lbs)