

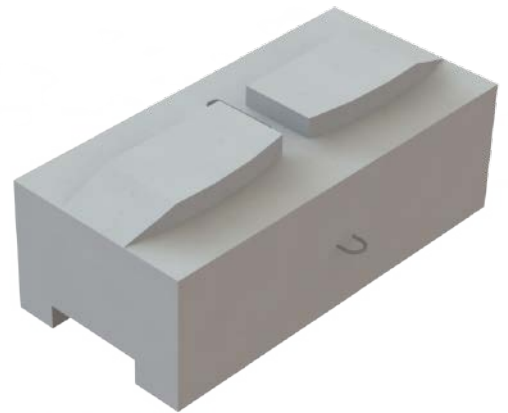
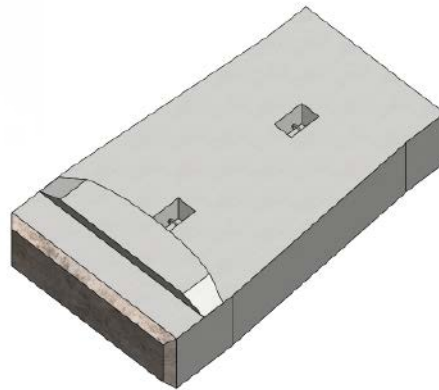
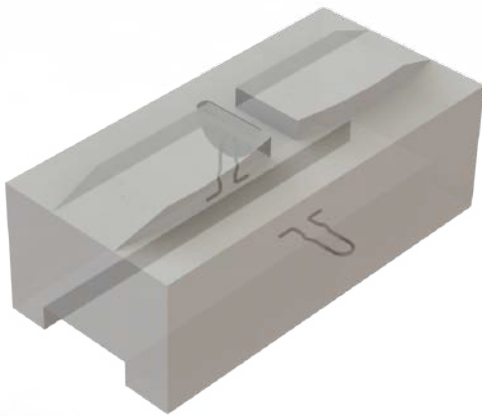


Part of the Afinitas Family



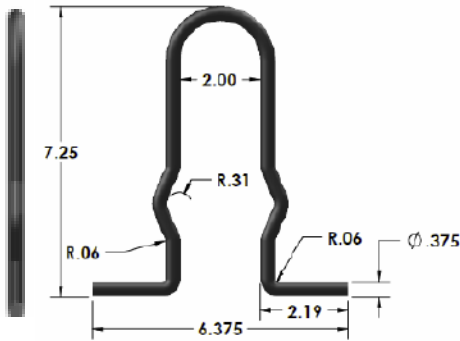
LB3819

3/8" X 7 1/4" LIFT BAR



LB3819 Advantages:

- Approved supplier for use in the ReCon Retaining Wall System.
- Built with All-American sourced steel.
- Available in Plain or Galvanized.
- All Galvanized units meet ASTM F2329 (inquire for alternative finishes and material).
- Fabrication is managed in a quality-controlled environment to ensure consistency.
- Independent 3rd party tension testing of the lift bar was performed in concrete at strengths of 1500 psi and 3000 psi and at multiple embedments.
- Haala Industries maintains a large inventory of all its standard lift bars reducing lead times for our customers.



3/8" X 7-1/4" Lift Bar

4-1/2" Embedment @ 1500 psi Concrete						
Sample	Test No.	Diameter (in.)	Embedment (in.)	Concrete Strength (psi)	Ultimate Load (lbs)	4:1 SWL (lbs)
LB3819	AVG	0.375	4.500	1500	18,794	4699

7" Embedment @ 1500 psi Concrete						
Sample	Test No.	Diameter (in.)	Embedment (in.)	Concrete Strength (psi)	Ultimate Load (lbs)	4:1 SWL (lbs)
LB3819	AVG	0.375	7.000	1500	21,950	5488

4-1/2" Embedment @ 3000 psi Concrete						
Sample	Test No.	Diameter (in.)	Embedment (in.)	Concrete Strength (psi)	Ultimate Load (lbs)	4:1 SWL (lbs)
LB3819	AVG	0.375	4.500	3000	23,169	5792



Part of the AFINITAS Family

Visit our website at www.haala.com to setup an account and place your order today!



Intelligent Infrastructure Solutions

Afinitas is a global, comprehensive and customer-oriented infrastructure equipment and services platform that brings together the expertise of HawkeyePedershaab, BFS, New Hampton Metal Fabrication, Spillman, and CAM Products.