

Description:

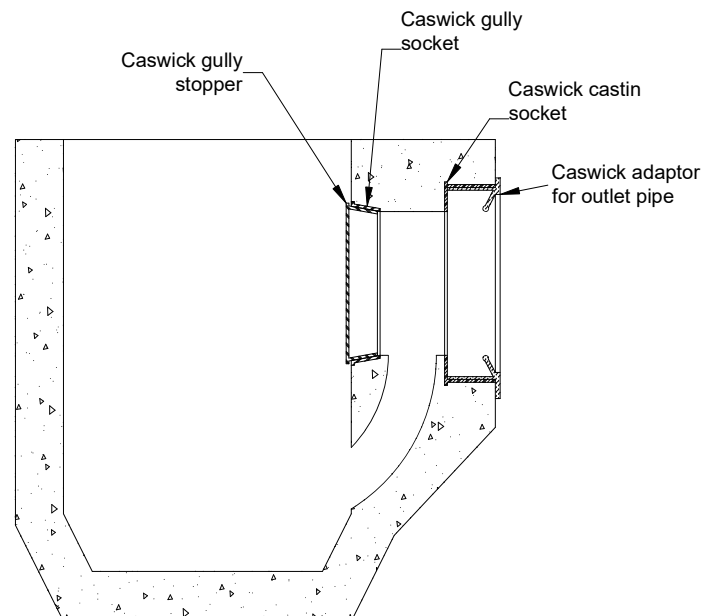
The castin socket is a moulded plastic component which is cast into underground concrete, pipelines, gullies and structures to form an accurate, smooth finished hole for a pipe and seal. The smooth finish and accurate round profile ensures a good water tight seal by resisting the slump of the concrete as it cures making it particularly advantageous for high output dry cast manufacturing. Using the socket also simplifies the design of automated machinery.

The main advantages of the socket are;

- Socket is cast in at time of manufacture of concrete component to form an accurate and stable socket
- High quality plastic prevents cracking in cold weather
- Material is resistant to a wide range of chemicals (material datasheet available on request)
- Sized to work with a range of commercially available seals or the Caswick range of EPDM gully adaptors

The castin socket is available in the following sizes;

Code	Inner Diameter (mm)	Socket Depth (mm)
SP100	205	50
SP133	198	51
SP161	205	65
SP169	178	57
SP174	198	65



Typical concrete gully pot