

Code:

SP206

Introduction:

The Caswick branch adaptor is designed to allow a DN150 (6") plastic pipe to be installed into a new or existing concrete pipe line. The

Advantages:

- Easy fit to concrete pipes > DN300
- Joining pipe cannot intrude on flow of main pipeline. A common cause of blockages
- Complies with EN295 air test requirements under deflection and shear loading

Materials:

Socket manufactured from high grade polypropylene copolymer, considered to have the same chemical resistance as 316 grade stainless steel. Seals are manufactured from TPE to EN681.

For more information please contact our sales team.



To install Caswick branch junction:



1. Core a 178mm (7") diameter hole in the concrete pipe. Ensure it is perpendicular.



2. Ensure the hole is clean and free from score marks, a poor quality hole may reduce the effectiveness of the seal. Push seal ST100 into the cored hole, no lubricant is required.



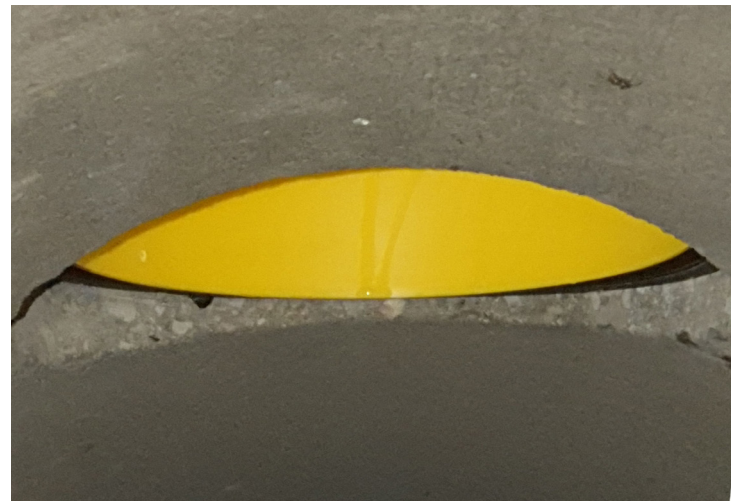
3. Lubricate the inside of seal and the spigot on the branch adaptor with a high quality lubricant. Push the branch adaptor into the seal. Using a board can help maintain alignment and make assembly easier.



4. Ensure the socket is pushed fully home, fit the second seal.



5. Ensure the pipe has a good chamfer, lubricate the inside of seal and the spigot on the pipe and press into the seal. Ensure the pipe is fully engaged.



6. Neither branch adaptor or pipe can protrude into the flow of the pipe.