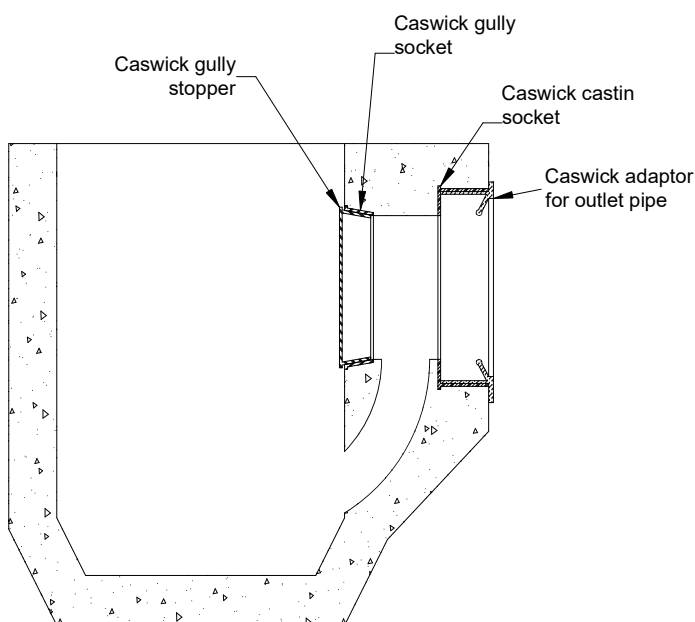


Description:

The gully stopper is a removable plastic bung which creates access for rodding the pipeline from a concrete gully pot. A plastic socket is cast into the concrete pot such that when the bung is in place it creates a water tight seal maintaining the water trap seal. The gully stopper and socket can be supplied as two discrete components or as an assembled unit to suit the chosen production method of the concrete gully.

The main advantages of the gully stopper and socket are;

- ▶ Socket is cast in at time of gully pot manufacture to form an accurate and stable socket
- ▶ Stopper fits tightly into socket to ensure water trap is maintained and socket isn't dislodged during high flow
- ▶ Stopper is secured via a strap to prevent loss through dropping or when gully is being cleared by vacuum
- ▶ 110mm diameter clear opening for rodding
- ▶ Low scrap value discourages theft
- ▶ High quality plastic prevents cracking in cold weather
- ▶ Material is resistant to a wide range of chemicals (material datasheet available on request)



Typical concrete gully pot

