



Prima Fit Wetcast Automation



Flexible automated system to produce:

- Median barriers
- Retaining walls
- Manhole products
- Other road and railway products
- Specialty products

Prima 360 is our innovative family of wetcast equipment and automation systems. Prima leverages a wide range of technologies we've developed internally to bring you the power to get wetcast products to market faster and with the utmost quality. No matter the size of your operation or range of products you make, we have a Prima to meet your needs and budget. With Prima you'll enhance productivity, reduce labor issues, increase throughput, and, ultimately, win more business.

Prima

Cutting-edge wetcast automation system designed to bring assembly line efficiency to the production of infrastructural products.

Prima is the ultimate system to take the guesswork and variability out of your wetcast product production. With a state-of-the-art production loop, automatic inventory management system and real-time analytics, Prima's highly optimized work stations reduce labor and increase throughput. Prima simplifies planning and provides all the metrics needed to optimize processes at every level of production.



Prima Base

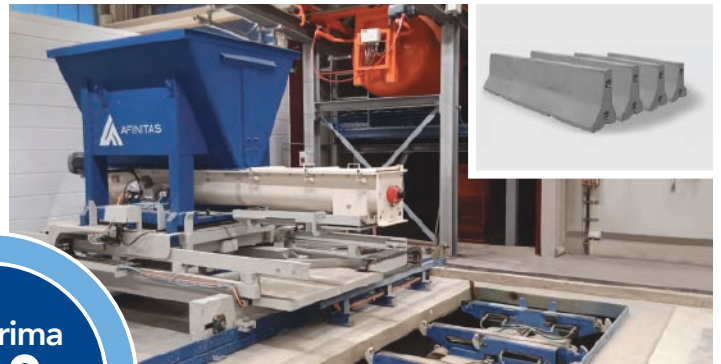
Maximize production efficiency, range and consistency of monolithic manhole bases.

Prima Base is an intuitive design software for creating limitless channel flow options for monolithic manhole bases. Prima Base transforms the labor-intensive, inconsistent traditional methods of producing monolithic manhole bases using an intelligent digital configurator and precision EPS milling system. Increase your output and quality while reducing rework with Prima Base.

Prima Fit

Ingenious automation that flexes to your factory footprint or precast concrete product requirements.

Prima Fit—as the name suggests—is wetcast automation that scales to fit your requirements. It's a powerful, yet economical option that utilizes vertical product stacking to maximize floor space. In addition, Prima Fit can be easily configured to produce specialty precast structures that would require extra space and set up time on other systems. The flexibility and affordability of Prima Fit makes it an excellent choice to optimize your wetcast operations without breaking the bank.



Prima Scape

Experience the beauty and precision of concrete slab and veneer production automation.

Prima Scape draws upon decades of vibration technology to help you create visually appealing and mechanically precise slabs, pavers, veneers and more. With one automated system, create reproductions of natural stones, slate, granite or terracotta in exact laying units for flooring, pool and fountain slabs, patios, deck slabs and other residential and commercial applications.

The Prima
360
Platform

An economical, space-saving system for automated wetcast production.

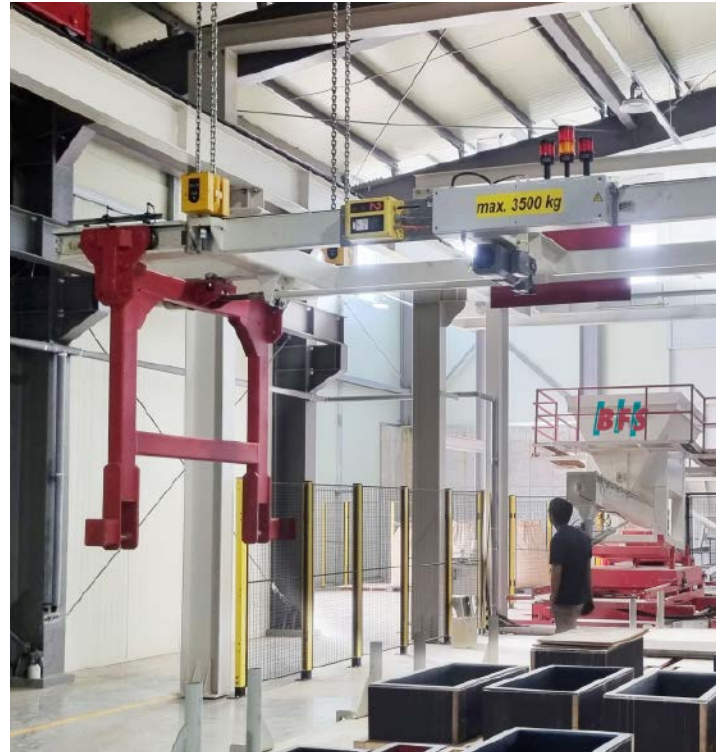
The Prima Fit system created by BFS has been used for decades to produce a variety of architectural products. Over the years the technology has evolved to create an extremely efficient and effective system to streamline production. Prima Fit does this with a unique vertical stacking system that optimizes plant floor space.

Prima Fit is Ideally Suited to Produce:

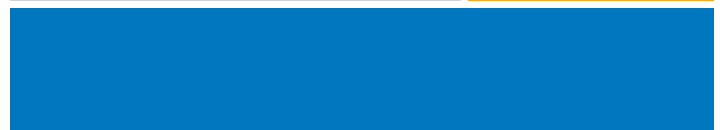
- Median barriers
- Retaining walls
- Manhole products
- Other road and railway products
- Specialty products

Our technical team can help you design a system that optimizes your plant footprint and product needs.

Contact us today to learn more.



End Products



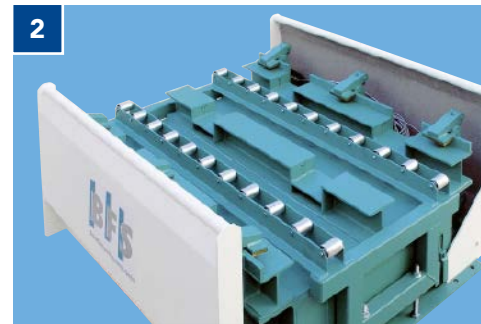
Prima Fit Production Line

The Prima Fit production system for wetcast concrete product production is a modular system that uses a vertical stacking process to maximize factory floor space.



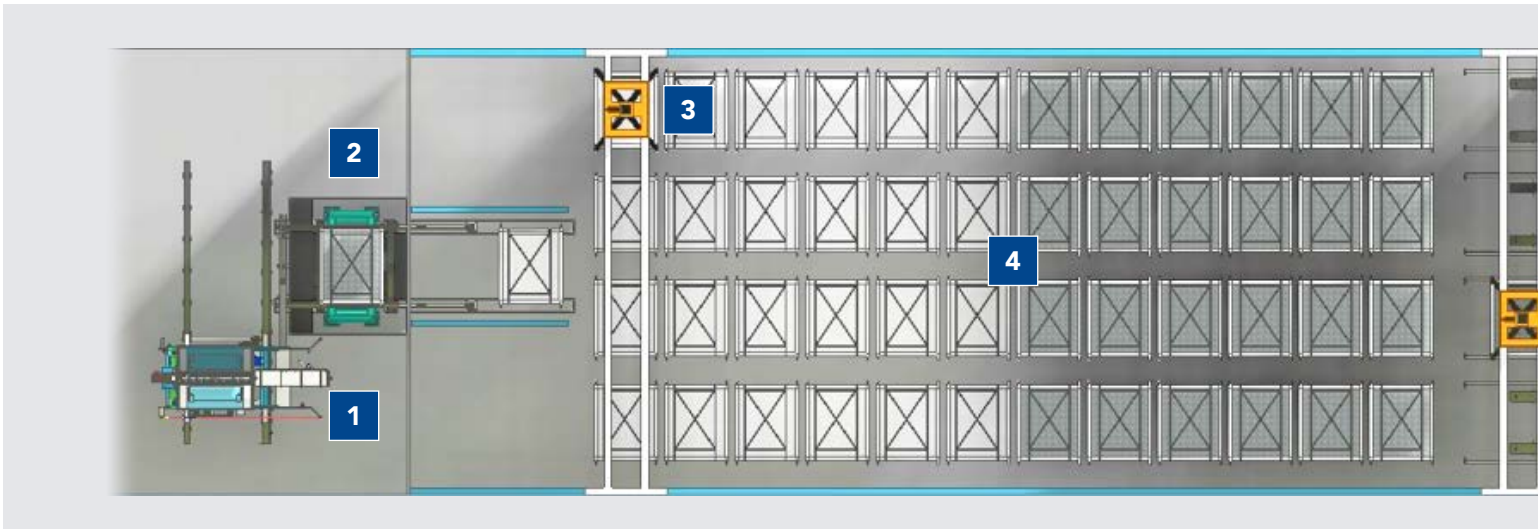
Concrete Filling

- Concrete is conveyed via screw conveyor and filled in the mold via a metering slide valve and filling funnel.
- Available with a highly sensitive concrete weighing system to precisely dose concrete into the molds.
- Silo outlet is hydraulically adjustable in height so filling height can be adapted exactly to the mold.
- Mold contour can be traversed manually or via remote control or fully automated via a programmed path.
- Easy to clean as silo and dosing screw can be lifted out for cleaning and transporting to washing station.



Filling Station with Vibration Table

- Specially designed system, switchable for compacting conventional concrete and shaking SCC.



Crane Lifting

- Crane can be fitted with a double hock unit to operate different size molds.
- The transfer and stacking of mold carrier pallets can be done either manually with a crane lifting system, a rail-bound gantry drive unit or via a fully automated high-bay storage system.



Mold Carrier Stacking Area

- Pallets are stacked vertically for storage and curing to optimize floor space.



Demolding/Outfeed Lines

- In the demolding station the hardened concrete products are taken out of the mold, turned and placed on a conveyor belt.
- Can be equipped with a vib-beam for demolding support.
- The production pallets are cleaned automatically and prepared for the next usage by the application of release agent in the spraying station.



- Depending on the direction of rotation, either a relatively small flywheel mass is set in motion at high speed for compaction or a large flywheel mass at low speed for shaking.
- The mold carrier pallet is moved to the vibrating table by a moving beam. The air springs lift the carrier pallet from the moving beam, and the pallet is hydraulically clamped onto the table.
- The vibrators are driven by electric motors via frequency converters.

Global Technical Support

Afinitas has decades of engineering and technical expertise to serve your needs worldwide.

- Pre-Project Services
- Equipment Start Up and Commissioning
- Vast Parts Inventory



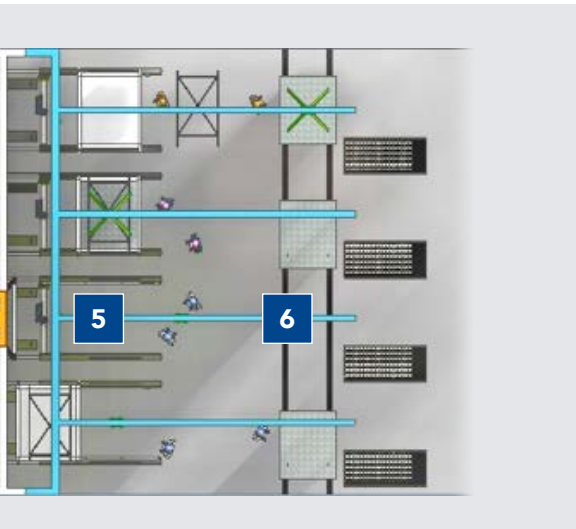
SmartSet™ Curing Systems

- NextGen and basic direct-fired steam generators
- Controls and airflow systems
- Misting and drying components
- Kilns, piping, moving floors
- Dedicated tech team and service



Are You Producing Polymer Products?

Our wetcast automation equipment is designed to meet your polymer needs, no matter the product type or size. Ask your Afinitas sales representative for a quote.



Product Transport

- Automated or via shuttle cart



For more information on the Prima 360 system that's right for your operation, contact your local Afinitas sales representative.



Prima Fit A Smarter Way to Wetcast

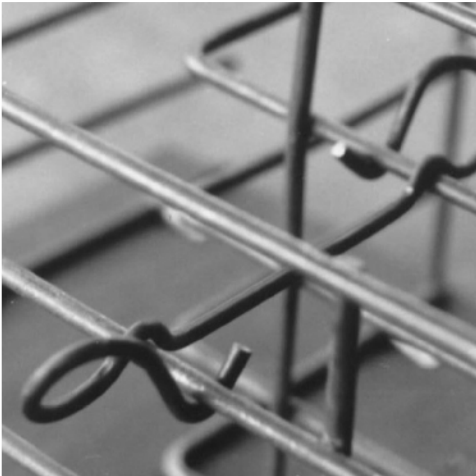


Equipment & Automation



Forming Systems

Concrete Accessories



Intelligent Infrastructure Solutions
Visit www.afinitas.com to learn more.

Afinitas Equipment and Automation Division

North America

506 S. Wapello St.
Mediapolis, Iowa 52637
Phone: +1 319-394-3197
info@afinitas.com

Parts
Phone: +1 319-394-2240
hawkeyeparts@afinitas.com

Service
Phone: +1 319-394-2270
hawkeyetech@afinitas.com

Denmark

Saltumvej 25
9700 Brønderslev, Denmark
Phone: +45 9645 4000
info-DK@afinitas.com

Parts
Phone: +45 9645 4172
aftersales@afinitas.com

Service
Phone: +45 9645 4050
pedershaabtech@afinitas.com

Germany

Dr. -Georg-Spohn-Str. 31
89143 Blaubeuren, Germany
Phone: +49 7344 96030
info-DE@afinitas.com

Parts
Phone: +49 7344 9603-77
bfs.spareparts@afinitas.com

Service
Phone: +49 7344 9603-55
bfs.service@afinitas.com

Italy

Viale Venezia 79/G 33074
Fontanafredda, Italy
Phone: +39 0434 599211
info-ITA@afinitas.com

Parts
Phone: +39 0434 599211
info-ITA@afinitas.com

Service
Phone: +39 0434 599211
info-ITA@afinitas.com



Intelligent Infrastructure Solutions

Afinitas is a global, comprehensive and customer-oriented equipment, automation, forming and accessories platform for precast concrete and infrastructural products.

Afinitas: 8027 Forsyth Blvd. | St. Louis, MO 63105 USA | +1 314-726-2178 | info@afinitas.com
North America: +1 319-394-3197 | Denmark: +45 9645 4000 | Germany: +49 7344 96030