

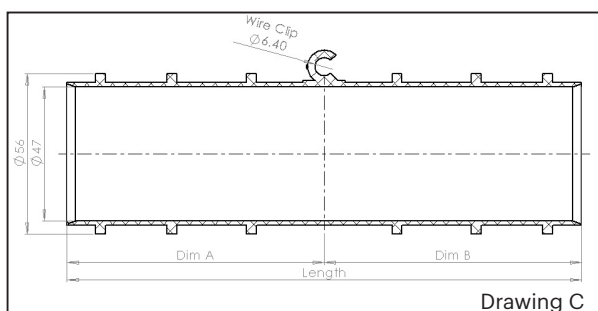
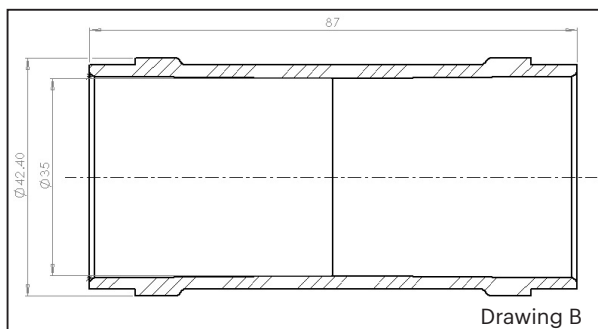
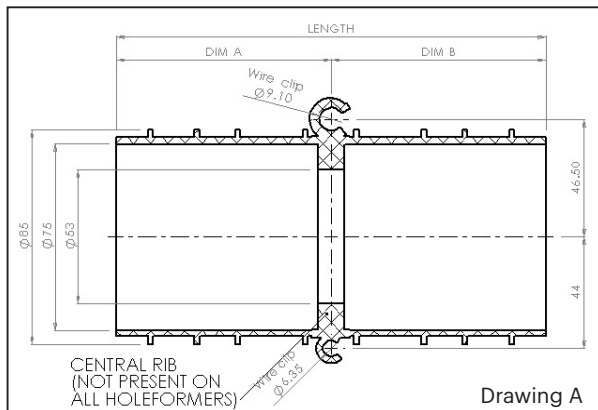
Description:

Holeformers are cast into concrete chamber rings to form a void through the concrete wall. Usually this is to allow water to pass from the chamber to the surrounding ground or vice versa.

The main advantages of holeformers are;

- ▶ Clips allow direct attachment to reinforcing wire simplifying mould design
- ▶ High quality plastic prevents cracking in cold weather
- ▶ Material is resistant to a wide range of chemicals (material datasheet available on request)
- ▶ Made with some recycled material

The holeformers are available in the following sizes. Standard holeformers have the clips in the centre of the length of the barrel, special holeformers have them offset by the dimensions shown. Holeformers can also be jointed by polystyrene link pieces. Polystyrene end plugs are also available to seal them against the mould in cases of concrete ingress.



Code	Diameter (mm)	Length (mm)	Dim A (mm)	Dim B (mm)	Central rib?
Holeformers listed below are dimensioned to drawing A					
SP110	75	60	30	30	No
SP123	75	64 special	37.5	26.5	No
SP111	75	65	32.5	32.5	No
SP112	75	70	35	35	No
SP124	75	70 special	37.5	32.5	No
SP113	75	75	37.5	37.5	No
SP125	75	82.5 special	37.5	45	No
SP114	75	85	42.5	42.5	No
SP115	75	90	45	45	No
SP126	75	90 special	42.5	47.5	No
SP116	75	95	47.5	47.5	No
SP117	75	100	50	50	No
SP118	75	110	55	55	No
SP157	75	115 special	55	60	No
SP119	75	120	60	60	No
SP143	75	124	62	62	No
SP120	75	135	67.5	67.5	No
SP121	75	145	72.5	72.5	No
SP175	75	152.5 special	72.5	80	No
SP122	75	160	80	80	No
SP145	75	168	84	84	Yes

Holeformers listed below are dimensioned to drawing B

SP182	35	87	43.5	43.5	No
-------	----	----	------	------	----

Holeformers listed below are dimensioned to drawing C

	47	70	35	35	No
	47	85	42.5	42.5	No
	47	180	90	90	No

EPS cut components to link holeformers or plug ends

SEPS1504 (end plug)	75	25	N/A	N/A	N/A
SPES1505 (link piece)	75	50	N/A	N/A	N/A

