



Polymer Forming Systems



Formwork for High Throughput and
Reliable Product Consistency

- Vaults
- Traffic Signal Enclosures
- Manhole Products



Polymer Formwork
Solutions

Polymer Formwork for Handhole Utility Vaults and Traffic Signal Enclosures

When it comes to casting high-performance polymer products like manhole cones, risers and bases, utility vaults, traffic enclosures and more, having the right formwork makes all the difference.

Our specialized forms are designed to meet the standards of polymer materials, offering unmatched reliability, durability and product finish quality.



Formwork for Manhole Products Manhole Cones

Diameters 42" – 72"

- Eccentric Cone
- Concentric Cone
- Eccentric / Concentric Cone With Extended Riser
- Transition Cone

Scan to see our Manhole Cone Brochure for more options.



Afinitas is your source
for Wetcast Forming Systems.



Contact our team at
+1 641-394-4111
or email rfq@afinitas.com

Formwork for Manhole Products Manhole Risers and Bases

Diameters 24" – 144"

- Straight Base
- Extended Base

Scan to see our Manhole Riser Brochure for more options.



Formwork for Manhole Products Manhole Risers and Bases

Diameters 84" – 144"

- Extended Base
- Straight Base

Scan to see our Manhole Base Brochure for more options.



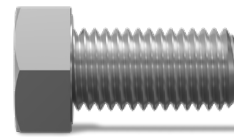


Concrete Accessories for Polymer Forms

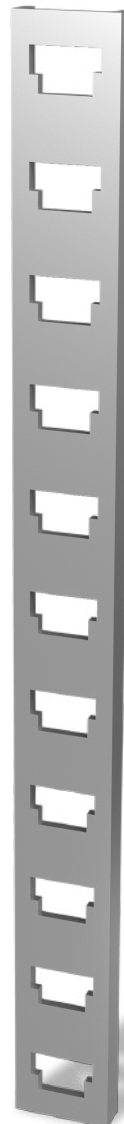
Another advantage of working with Afinitas is our selection of concrete accessories for your polymer product production needs. Get everything you need from a single, trusted source. Contact our accessories team at accessories-info@afinitas.com.

Count on Afinitas for:

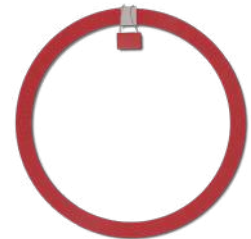
- **EMS Markers** (power and telecommunication)
- **Cable Rack and Cable Rack Arms**
- **Plastic and Zinc Inserts**
- **Stainless Steel Fasteners** (hex bolts, penta head bolts, Lag/auger threaded bolts, carriage bolts, machine screws, hex nuts, weld nuts, T-nuts, square nuts, security screws, washers)
- **Brass Fasteners** (nuts)
- **Custom Products** (special bolts, stainless cage nuts, stainless lid lifting pins, holding plate assemblies and more)
- **Custom Injection Molded Products-** (floating nut locators)
- **Pulling eye assemblies** (eye nuts, plate washers, bolts)



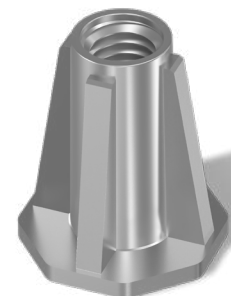
Wide variety of fasteners



Cable Rack



EMS Markers



Zinc and Plastic Inserts



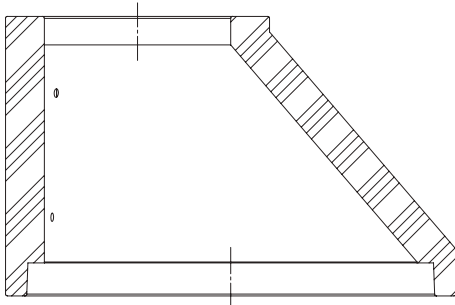
Afinitas is your source
for Concrete Accessories

Contact our team at
+1 800-835-5581
or accessories-info@afinitas.com

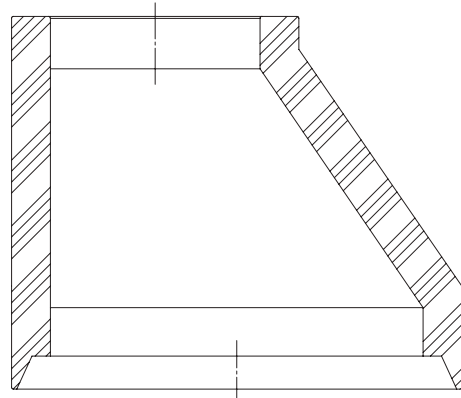


Manhole Cone

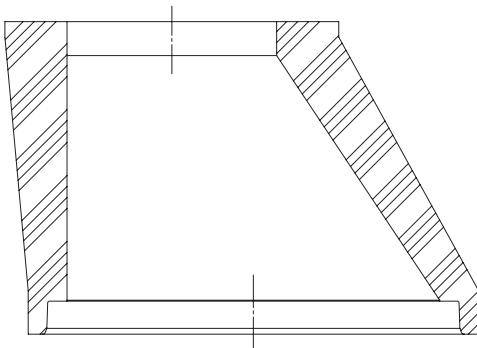
Isometric Views



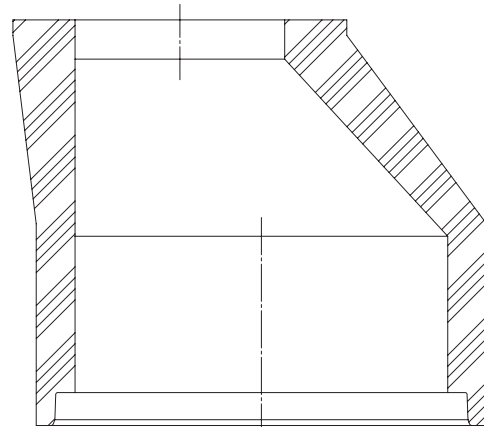
ECCENTRIC CONE



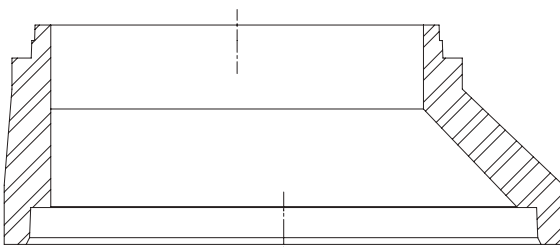
ECCENTRIC CONE W/RISER



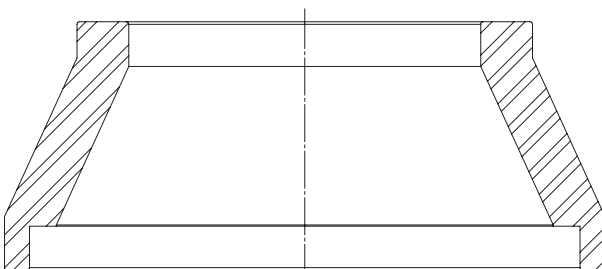
ECCENTRIC CONE



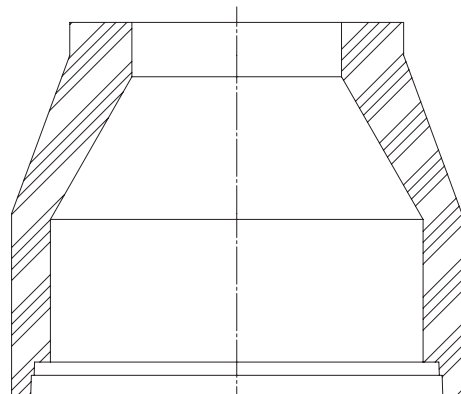
ECCENTRIC CONE W/RISER



ECCENTRIC TRANSITION CONE



CONCENTRIC CONE

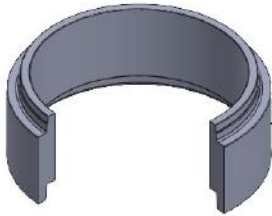


CONCENTRIC CONE W/RISER

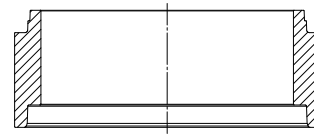


Manhole Riser and Base Stack-Ups

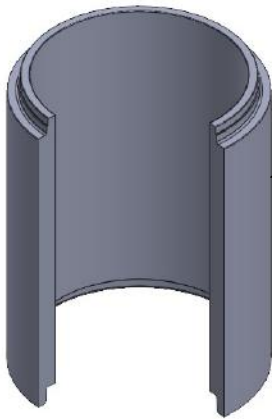
Short and Tall Risers. Risers available in 12" or 16" tall increments.



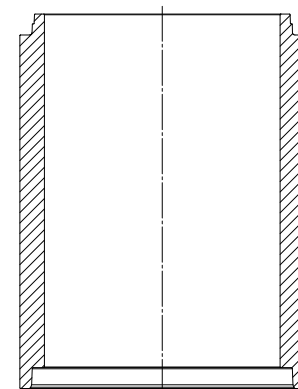
SHORT RISER



RISER



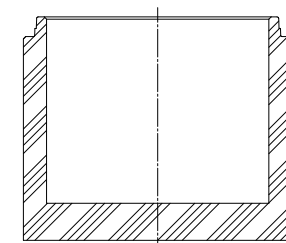
TALL RISER



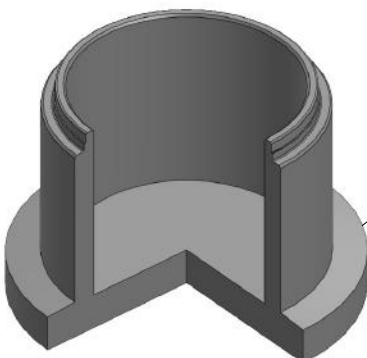
RISER



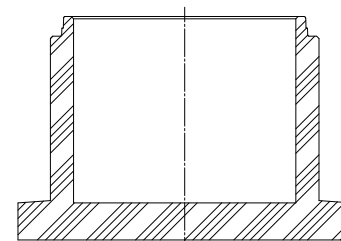
STRAIGHT BASE



STRAIGHT BASE



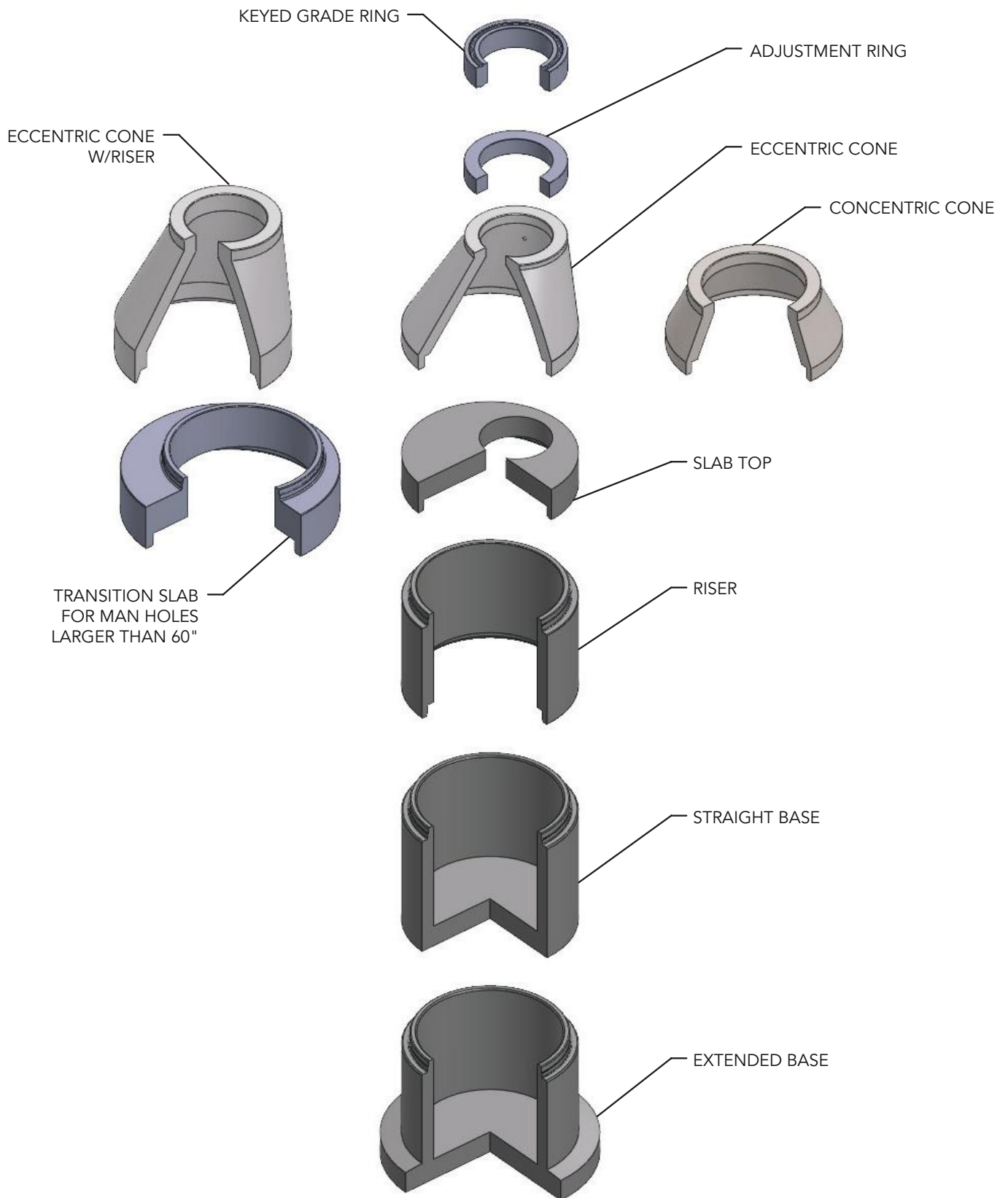
EXTENDED BASE



EXTENDED BASE



Manhole Cone Stack-Ups



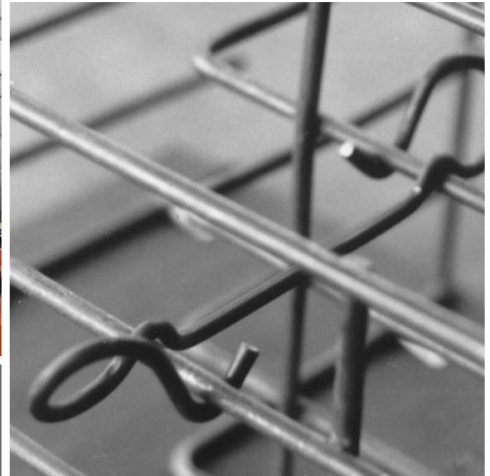


Polymer Forming Systems

Equipment & Automation



Concrete Accessories



Forming Systems



Intelligent Infrastructure Solutions
Visit www.afinitas.com to learn more.

Afinitas Forming Systems Division

Iowa

928 W Milwaukee
New Hampton, IA 50659
Phone: 641-394-4111
Fax: 641-394-4542
rfq@afinitas.com

Ohio

1701 Moler Road
Columbus, OH 43207
Phone: 614-444-2184
rfq@afinitas.com



Intelligent Infrastructure Solutions

Afinitas is a global, comprehensive and customer-oriented equipment, automation, forming and accessories platform for precast concrete and infrastructural products.

Afinitas Forming Systems Division:

928 W. Milwaukee | New Hampton, IA 50659 USA | +1 641-394-4111 | rfq@afinitas.com | www.afinitas.com